



SITE PLAN - SCALE: 1" = 15'-0"

PAGE	TITLE	SHEET INDEX
A1	SITE PLAN	
A2	FLOOR PLAN - 1ST LEVEL	
A3	FLOOR PLAN - BASEMENT	
A5	ELEVATIONS	
A6	ROOF OVERVIEWS	

PROJECT NO.
17-038

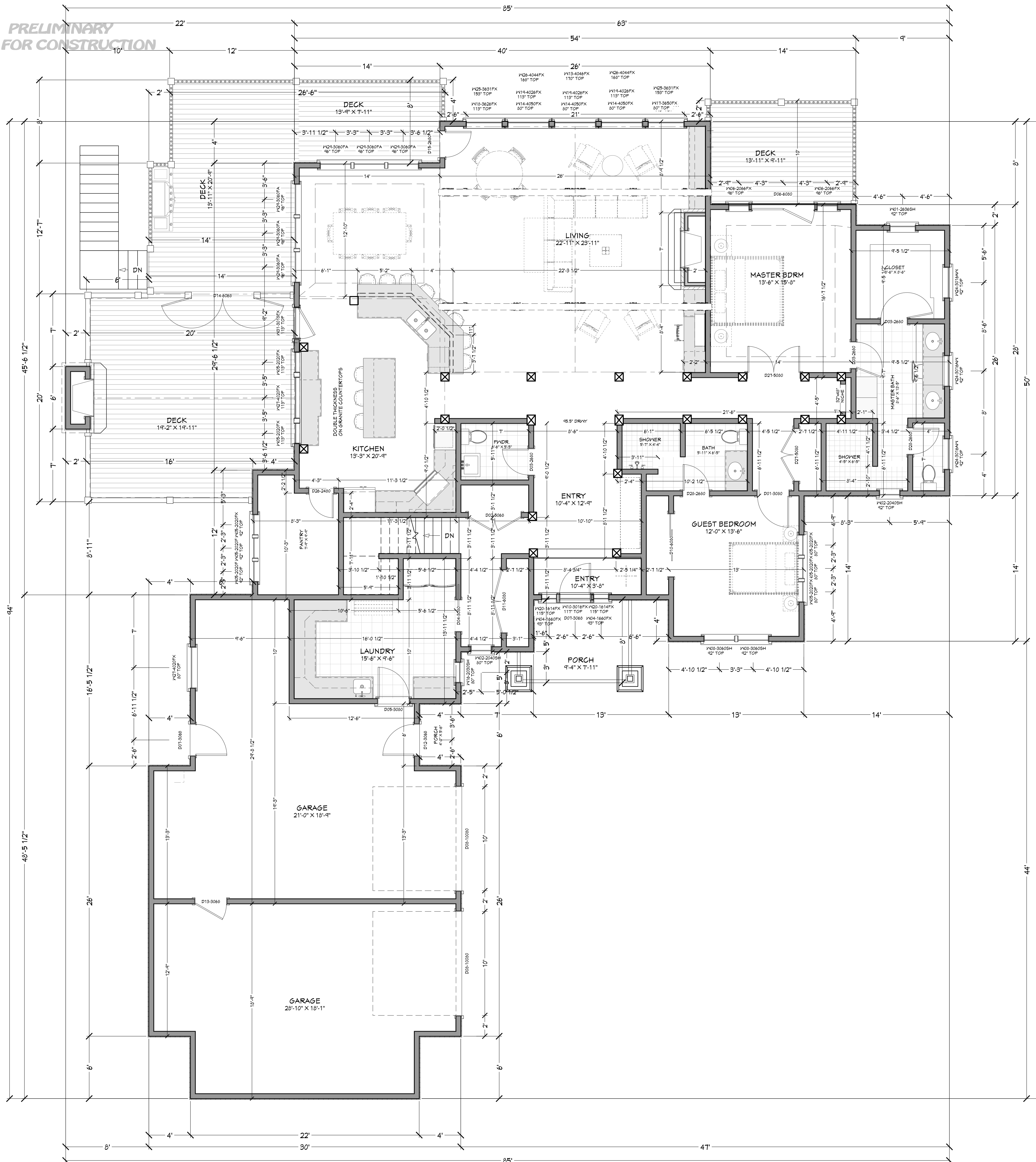
7 BDRM 7-1/2 BATH FOR MILLER
 PINETOP KING'S PINES ESTATES 1 - LOT #5 BLK #1 MCCALL, ID
 CONTRACTOR TO VERIFY ALL DETAILS, DIMENSIONS, AND SPECIFICATIONS PRIOR TO CONSTRUCTION, AND REPORT ANY OMISSIONS AND/OR ERRORS TO SMC DESIGN. THE PURCHASER OR BUILDER OF THIS PLAN RELEASES SMC DESIGN FROM ANY CLAIMS, LITIGATIONS OR SUITS THAT MAY ARISE DURING CONSTRUCTION OR ANYTIME THEREAFTER.

DRAWN BY: Steve
 SCALE: SEE PLAN
 INITIAL DATE: 6/30/2011
 PRINT DATE: 9/25/2011
 TITLE: SITE PLAN

SMC Design
 208.249.7288
 Nampa, ID

SHEET NUMBER
A1
 PAGE 1 OF 6

PRELIMINARY
NOT FOR CONSTRUCTION



NUMBER	FLOOR	SIZE	WIDTH	HEIGHT	FINISHES	TEMPERED	DESCRIPTION	COMMENTS	QTY	NUMBER
W01	1	36x36	36"	36"			SINGLE HINGE		2	W01
W02	1	36x36	36"	36"			SINGLE HINGE		2	W02
W03	1	36x36	36"	36"			SINGLE HINGE		2	W03
W04	1	36x36	36"	36"			SINGLE HINGE		2	W04
W05	1	36x36	36"	36"			SINGLE HINGE		2	W05
W06	1	36x36	36"	36"			SINGLE HINGE		2	W06
W07	1	36x36	36"	36"			SINGLE HINGE		2	W07
W08	1	36x36	36"	36"			SINGLE HINGE		2	W08
W09	1	36x36	36"	36"			SINGLE HINGE		2	W09
W10	1	36x36	36"	36"			SINGLE HINGE		2	W10
W11	1	36x36	36"	36"			SINGLE HINGE		2	W11
W12	1	36x36	36"	36"			SINGLE HINGE		2	W12
W13	1	36x36	36"	36"			SINGLE HINGE		2	W13
W14	1	36x36	36"	36"			SINGLE HINGE		2	W14
W15	1	36x36	36"	36"			SINGLE HINGE		2	W15
W16	1	36x36	36"	36"			SINGLE HINGE		2	W16
W17	1	36x36	36"	36"			SINGLE HINGE		2	W17
W18	1	36x36	36"	36"			SINGLE HINGE		2	W18
W19	1	36x36	36"	36"			SINGLE HINGE		2	W19
W20	1	36x36	36"	36"			SINGLE HINGE		2	W20
W21	1	36x36	36"	36"			SINGLE HINGE		2	W21
W22	1	36x36	36"	36"			SINGLE HINGE		2	W22
W23	1	36x36	36"	36"			SINGLE HINGE		2	W23
W24	1	36x36	36"	36"			SINGLE HINGE		2	W24
W25	1	36x36	36"	36"			SINGLE HINGE		2	W25
W26	1	36x36	36"	36"			SINGLE HINGE		2	W26
W27	1	36x36	36"	36"			SINGLE HINGE		2	W27
W28	1	36x36	36"	36"			SINGLE HINGE		2	W28
W29	1	36x36	36"	36"			SINGLE HINGE		2	W29
W30	1	36x36	36"	36"			SINGLE HINGE		2	W30
W31	1	36x36	36"	36"			SINGLE HINGE		2	W31

NUMBER	FLOOR	DOOR	WIDTH	HEIGHT	TYPE	TEMPERED	DESCRIPTION	COMMENTS	QTY	NUMBER
D01	1	6000 L IN	36"	80"	HINGED				1	D01
D02	1	6000 R IN	36"	80"	DOUBLE HINGED				1	D02
D03	1	6000 R IN	36"	80"	HINGED				1	D03
D04	1	6000 R	36"	80"	POCKET				1	D04
D05	1	6000 L EX	36"	80"	HINGED				1	D05
D06	1	6000 R L EX	36"	80"	DOUBLE HINGED				1	D06
D07	1	6000 R EX	36"	80"	HINGED				1	D07
D08	1	6000 L	36"	80"	POCKET				1	D08
D09	1	6000 L	36"	80"	POCKET				1	D09
D10	1	6000 L IN	36"	80"	DOUBLE				1	D10
D11	1	6000 R IN	36"	80"	DOUBLE HINGED				1	D11
D12	1	6000 R EX	36"	80"	HINGED				1	D12
D13	1	6000 R IN	36"	80"	HINGED				1	D13
D14	1	6000 R IN	36"	80"	DOUBLE HINGED			SEPARATE DOORS	1	D14
D15	1	6000 R IN	36"	80"	HINGED				1	D15
D16	1	6000 L EX	36"	80"	HINGED				1	D16
D17	1	6000 R IN	36"	80"	HINGED				1	D17
D18	1	6000 L IN	36"	80"	HINGED				1	D18
D19	1	6000 L IN	36"	80"	HINGED				1	D19
D20	1	6000 R IN	36"	80"	HINGED				1	D20
D21	1	6000 R IN	36"	80"	DOUBLE HINGED				1	D21
D22	1	6000 L IN	36"	80"	HINGED				1	D22
D23	1	6000 R IN	36"	80"	SLIDER				1	D23
D24	1	6000 R IN	36"	80"	HINGED				1	D24
D25	1	6000 L IN	36"	80"	HINGED				1	D25
D26	1	6000 L IN	36"	80"	HINGED				1	D26
D27	1	6000 R IN	36"	80"	DOUBLE HINGED				1	D27
D28	1	6000 L IN	36"	80"	HINGED				1	D28

MAIN LEVEL NOTES:
 ALL ANGLE 45° UNO
 2x6 EXT. WALLS @ 16" O.C.
 9'-1 1/8" PLATE HEIGHT UNO
 ALL PARTITION DIMENSIONS
 ARE TO FACE OF STUD

SHEET INDEX	
PAGE	TITLE
A1	SITE PLAN
A2	FLOOR PLAN - 1ST LEVEL
A3	FLOOR PLAN - BASEMENT
A4	ELEVATIONS
A5	ROOF OVERVIEWS

MAIN LEVEL 2802 sq. ft.
 BASEMENT 2105 sq. ft.
 TOTAL LIVING SPACE 5507 sq. ft.
 UNFINISHED SPACE 96 sq. ft.
 GARAGE 1005 sq. ft.
 COVD PORCH/DECK 1009 sq. ft.

PRELIMINARY
NOT FOR CONSTRUCTION

FLOOR PLAN - 1ST LEVEL 1/4" = 1'-0"

PROJECT NO.
17-038

7 BDRM 7-1/2 BATH FOR MILLER
 KING'S PINES ESTATES 1 - LOT #5 BLK #1 MCCALL, ID

SCALE:
SEE PLAN

INITIAL DATE: 6/30/2017
 PRINT DATE: 9/25/2017

DRAWN BY:
Steve

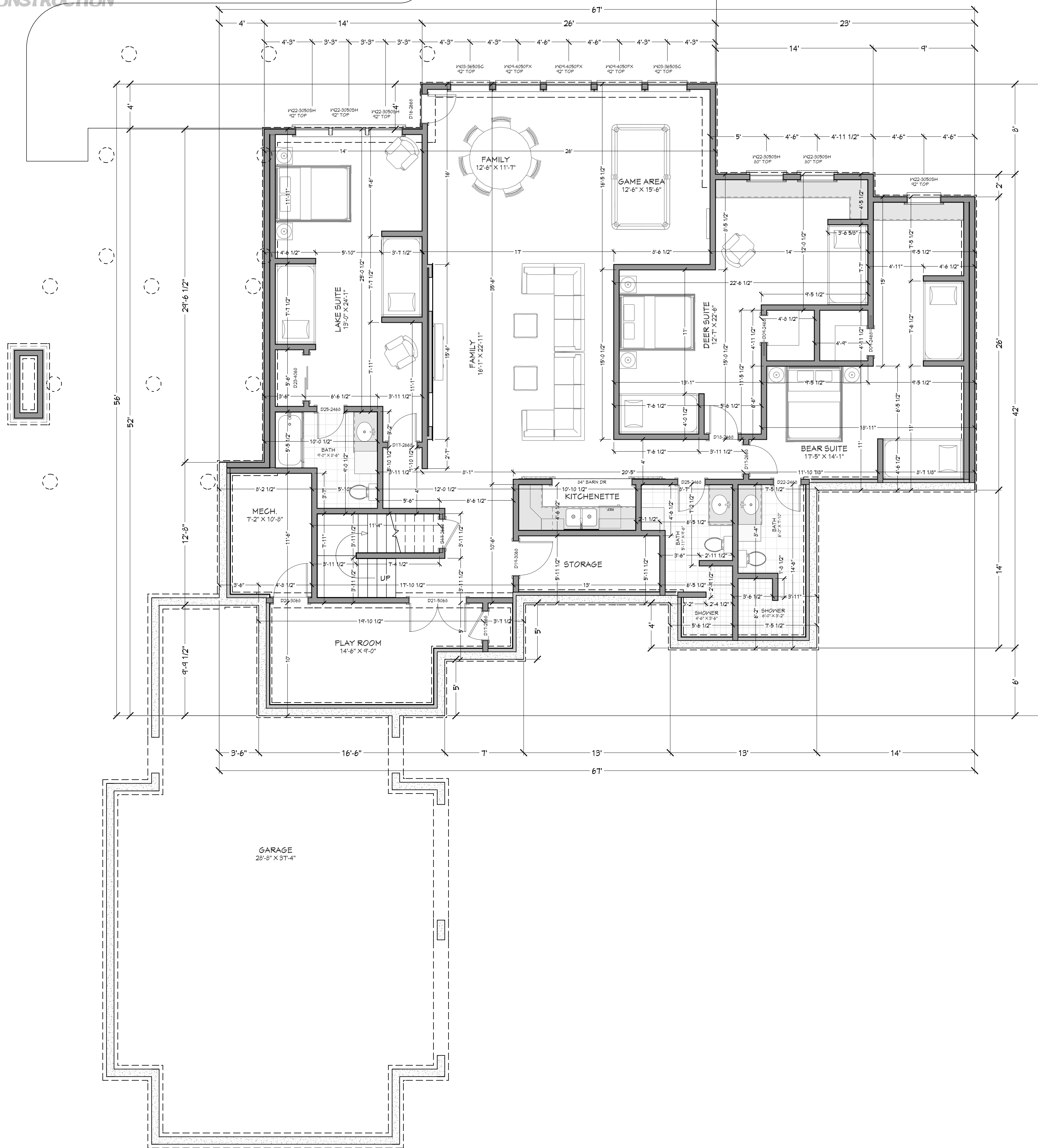
SMC Design
 SMC Design
 208.249.7288
 Nampa, ID

SHEET NUMBER
A2
 PAGE 2 OF 6

CONTRACTOR TO VERIFY ALL DETAILS, DIMENSIONS, AND SPECIFICATIONS PRIOR TO CONSTRUCTION. AND REPORT ANY OMISSIONS AND/OR ERRORS TO SMC DESIGN. THE PURCHASER OR BUILDER OF THIS PLAN RELEASES SMC DESIGN FROM ANY CLAIMS, LITIGATIONS OR SUITS THAT MAY ARISE DURING CONSTRUCTION OR ANYTIME THEREAFTER.

FLOOR PLAN - 1ST LEVEL

PRELIMINARY
NOT FOR CONSTRUCTION



FLOOR PLAN - BASEMENT 1/4" = 1'-0"

NUMBER	QTY	FLOOR	SIZE	WIDTH	HEIGHT	FINISH	TEMPERED	DESCRIPTION	COMMENTS	QTY	NUMBER
W01	1	0	36x50	36"	48"			SINGLE HINGE		1	W01
W02	1	0	36x50	36"	48"			SINGLE HINGE		1	W02
W03	1	0	36x50	36"	48"			SINGLE CASQUET-TR		1	W03
W04	1	0	36x50	36"	48"			FIXED GLASS		1	W04
W05	1	0	36x50	36"	48"			FIXED GLASS		1	W05
W06	1	0	36x50	36"	48"			FIXED GLASS		1	W06
W07	1	0	36x50	36"	48"			FIXED GLASS		1	W07
W08	1	0	36x50	36"	48"			FIXED GLASS		1	W08
W09	1	0	36x50	36"	48"			FIXED GLASS		1	W09
W10	1	0	36x50	36"	48"			FIXED GLASS-AT		1	W10
W11	1	0	36x50	36"	48"			FIXED GLASS-AT		1	W11
W12	1	0	36x50	36"	48"			FIXED GLASS		1	W12
W13	1	0	36x50	36"	48"			FIXED GLASS		1	W13
W14	1	0	36x50	36"	48"			FIXED GLASS		1	W14
W15	1	0	36x50	36"	48"			FIXED GLASS		1	W15
W16	1	0	36x50	36"	48"			FIXED GLASS		1	W16
W17	1	0	36x50	36"	48"			FIXED GLASS		1	W17
W18	1	0	36x50	36"	48"			FIXED GLASS		1	W18
W19	1	0	36x50	36"	48"			FIXED GLASS		1	W19
W20	1	0	36x50	36"	48"			FIXED GLASS-AT		1	W20
W21	1	0	36x50	36"	48"			FIXED GLASS-AT		1	W21
W22	1	0	36x50	36"	48"			FIXED GLASS-AT		1	W22
W23	1	0	36x50	36"	48"			FIXED GLASS-AT		1	W23
W24	1	0	36x50	36"	48"			FIXED GLASS-AT		1	W24
W25	1	0	36x50	36"	48"			FIXED GLASS-AT		1	W25
W26	1	0	36x50	36"	48"			FIXED GLASS-AT		1	W26
W27	1	0	36x50	36"	48"			FIXED GLASS		1	W27
W28	1	0	36x50	36"	48"			FIXED GLASS		1	W28
W29	1	0	36x50	36"	48"			FIXED GLASS		1	W29
W30	1	0	36x50	36"	48"			FIXED GLASS		1	W30
W31	1	0	36x50	36"	48"			FIXED GLASS		1	W31

NUMBER	QTY	FLOOR	SIZE	WIDTH	HEIGHT	TYPE	TEMPERED	DESCRIPTION	COMMENTS	QTY	NUMBER
D01	1	0	36x50	36"	48"	HINGED				1	D01
D02	1	0	36x50	36"	48"	DOUBLE HINGED				1	D02
D03	1	0	36x50	36"	48"	HINGED				1	D03
D04	1	0	36x50	36"	48"	HINGED				1	D04
D05	1	0	36x50	36"	48"	HINGED				1	D05
D06	1	0	36x50	36"	48"	DOUBLE HINGED				1	D06
D07	1	0	36x50	36"	48"	HINGED				1	D07
D08	1	0	36x50	36"	48"	HINGED				1	D08
D09	1	0	36x50	36"	48"	HINGED				1	D09
D10	1	0	36x50	36"	48"	HINGED				1	D10
D11	1	0	36x50	36"	48"	DOUBLE HINGED				1	D11
D12	1	0	36x50	36"	48"	HINGED				1	D12
D13	1	0	36x50	36"	48"	HINGED				1	D13
D14	1	0	36x50	36"	48"	DOUBLE HINGED			SEPARATE DOORS	1	D14
D15	1	0	36x50	36"	48"	HINGED				1	D15
D16	1	0	36x50	36"	48"	HINGED				1	D16
D17	1	0	36x50	36"	48"	HINGED				1	D17
D18	1	0	36x50	36"	48"	HINGED				1	D18
D19	1	0	36x50	36"	48"	HINGED				1	D19
D20	1	0	36x50	36"	48"	HINGED				1	D20
D21	1	0	36x50	36"	48"	DOUBLE HINGED				1	D21
D22	1	0	36x50	36"	48"	HINGED				1	D22
D23	1	0	36x50	36"	48"	SLIDER				1	D23
D24	1	0	36x50	36"	48"	HINGED				1	D24
D25	1	0	36x50	36"	48"	HINGED				1	D25
D26	1	0	36x50	36"	48"	HINGED				1	D26
D27	1	0	36x50	36"	48"	DOUBLE HINGED				1	D27
D28	1	0	36x50	36"	48"	HINGED				1	D28

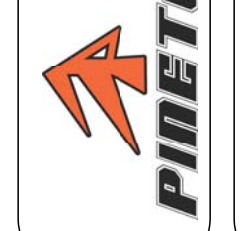
FOUNDATION NOTES:
ALL ANGLE 45° UNO
8" THICK WALLS CONCRETE
FOUNDATION WALLS
STEP DOWN STEMWALL
TO FOLLOW NATURAL TERRAIN

PAGE	TITLE
A1	SITE PLAN
A2	FLOOR PLAN - 1ST LEVEL
A3	FLOOR PLAN - BASEMENT
A4	ELEVATIONS
A5	ROOF OVERVIEWS

MAIN LEVEL 2802 sq. ft.
BASEMENT 2105 sq. ft.
TOTAL LIVING SPACE 5507 sq. ft.
UNFINISHED SPACE 96 sq. ft.
GARAGE 1005 sq. ft.
COVID PORCH/DECK 1009 sq. ft.

PROJECT NO.
17-038

7 BDRM 7-1/2 BATH FOR MILLER
KING'S PINES ESTATES 1 - LOT #5 BLK #1 MCCALL, ID



CONTRACTOR TO VERIFY ALL DETAILS, DIMENSIONS, AND SPECIFICATIONS PRIOR TO CONSTRUCTION. AND REPORT ANY OMISSIONS AND/OR ERRORS TO SMC DESIGN. THE PURCHASER OR BUILDER OF THIS PLAN RELEASES SMC DESIGN FROM ANY CLAIMS, LITIGATIONS OR SUITS THAT MAY ARISE DURING CONSTRUCTION OR ANYTIME THEREAFTER.

SCALE:
SEE PLAN

INITIAL DATE: 6/30/2017
PRINT DATE: 9/25/2017

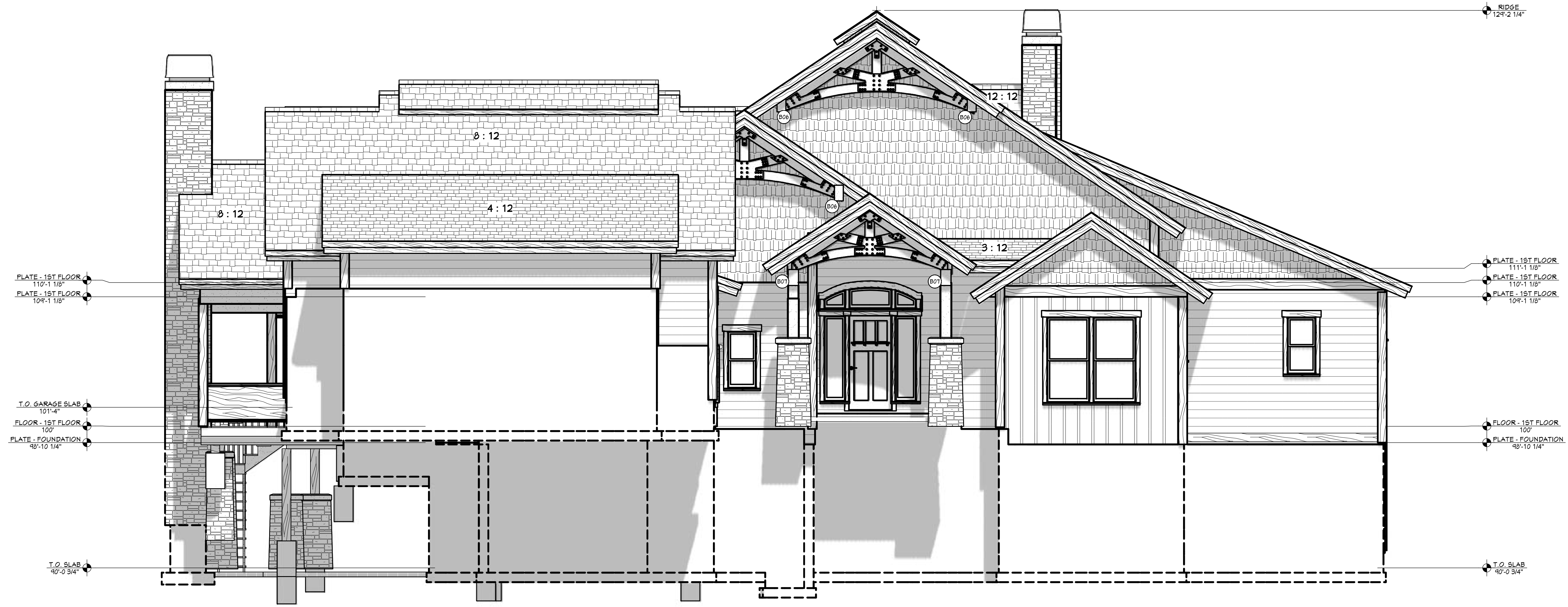
DRAWN BY:
Steve

FLOOR PLAN - BASEMENT

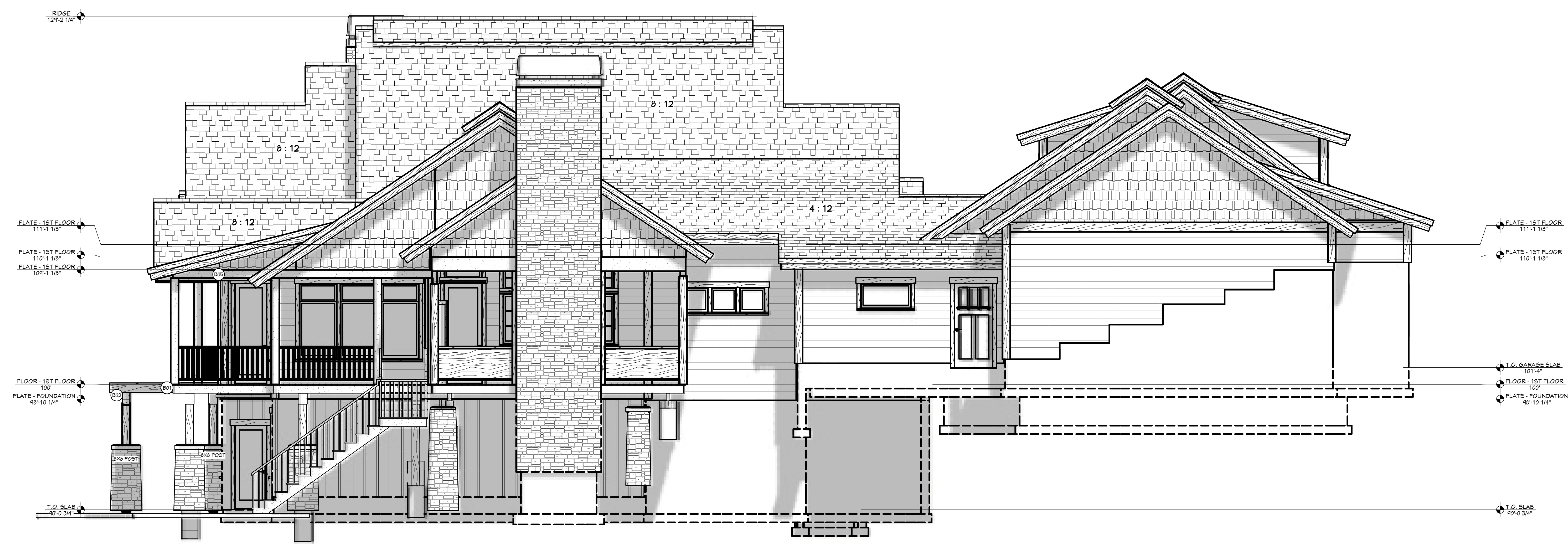
SMC Design
SMC Design
208.249.7288
Nampa, ID

SHEET NUMBER
A3
PAGE 3 OF 6

PRELIMINARY
NOT FOR CONSTRUCTION



FRONT ELEVATION 1/4" = 1'-0"



LEFT ELEVATION 1/4" = 1'-0"

BEAM SCHEDULE					
NO.	QTY	NOMINAL	LENGTH	DEPTH	TYPE
B01	11	2" X 10"	8.12'	8.14"	LUMBER
B02	1	2" X 12"	11.14'	11.14"	LUMBER
B03	11	2" X 12"	1.12'	11.14"	LUMBER
B04	21	2" X 12"	1.12'	1.12'	LUMBER
B05	6	2" X 12"	1.12'	1.12'	LUMBER
B06	6	2" X 14"	1.12'	15.14"	LUMBER
B07	2	2" X 14"	2.34'	15.14"	LUMBER
B08	4	4" X 8"	8.34'	7.12"	LUMBER
B09	1	4" X 12" X 12"	8.91'	11.14"	LUMBER
B10	2	2" X 11.14"	1.12'	11.14"	LUMBER
B11	10	2" X 12"	3.90'	8.14"	LUMBER
B12	5	2" X 12"	1.12'	8.14"	LUMBER
B13	2	1.86" X 14"	1.86'	13.14"	LUMBER
B14	2	1.12" X 12"	4.12'	11.14"	LUMBER
B15	3	4" X 8"	8.12'	7.14"	LUMBER
B16	5	2" X 10" X 10"	8.34'	10.12"	LUMBER

SHEET INDEX	
PAGE	TITLE
A1	SITE PLAN
A2	FLOOR PLAN - 1ST LEVEL
A3	FLOOR PLAN - BASEMENT
A5	ELEVATIONS
A6	ROOF OVERVIEWS

PROJECT NO.
17-038

7 BDRM T-1/2 BATH FOR MILLER
KING'S PINES ESTATES 1 - LOT #5 BLK #1 MCCALL, ID

SCALE:
SEE PLAN

INITIAL DATE: 6/30/2017
PRINT DATE: 8/25/2017

DRAWN BY:
Steve

SMC Design
SMC Design
208.249.7288
Nampa, ID

SHEET NUMBER
A4
PAGE 4 OF 6

CONTRACTOR TO VERIFY ALL DETAILS, DIMENSIONS, AND SPECIFICATIONS PRIOR TO CONSTRUCTION, AND REPORT ANY OMISSIONS AND/OR ERRORS TO SMC DESIGN. THE PURCHASER OR BUILDER OF THIS PLAN RELEASES SMC DESIGN FROM ANY CLAIMS, LITIGATIONS OR SUITS THAT MAY ARISE DURING CONSTRUCTION OR ANYTIME THEREAFTER.



REAR ELEVATION 1/4" = 1'-0"



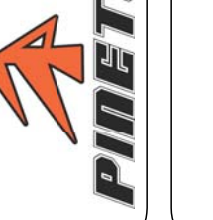
RIGHT ELEVATION 1/4" = 1'-0"

NO.	QTY.	NOMINAL	DEPTH	DEPTH	TYPE
B01	11	4" X 12"	3.125"	4.14"	LUMBER
B02	1	8" X 12"	3.125"	11.14"	LUMBER
B03	11	8" X 12"	3.125"	11.14"	LUMBER
B04	21	8" X 8"	3.125"	7.125"	LUMBER
B05	6	8" X 12"	3.125"	12"	LUMBER
B06	8	8" X 16"	3.125"	18.14"	LUMBER
B07	2	8 3/4" X 14"	8.34"	18.125"	GLULAM
B08	4	4" X 8"	3.34"	7.125"	LUMBER
B09	1	8 3/4" X 12"	8.34"	11.14"	LUMBER
B10	2	8" X 11 1/4"	3.125"	11.14"	LUMBER
B11	10	1 3/8" X 10"	1.375"	4.165"	LUMBER
B12	5	8" X 10"	3.125"	4.165"	LUMBER
B13	1	1 3/8" X 12"	1.375"	18.14"	LUMBER
B14	2	10" X 12"	4.125"	11.14"	LUMBER
B15	8	4" X 8"	3.125"	7.14"	LUMBER
B16	5	3 3/4" X 10 1/2"	8.25"	10.125"	GLULAM

PAGE	TITLE
A1	SITE PLAN
A2	FLOOR PLAN - 1ST LEVEL
A3	FLOOR PLAN - BASEMENT
A5	ELEVATIONS
A6	ROOF OVERVIEWS

PROJECT NO.
17-038

7 BDRM T-1/2 BATH FOR MILLER
KING'S PINES ESTATES 1 - LOT #5 BLK #1 MCCALL, ID



CONTRACTOR TO VERIFY ALL DETAILS, DIMENSIONS, AND SPECIFICATIONS PRIOR TO CONSTRUCTION, AND REPORT ANY OMISSIONS AND/OR ERRORS TO SMC DESIGN. THE PURCHASER OR BUILDER OF THIS PLAN RELEASES SMC DESIGN FROM ANY CLAIMS, LITIGATIONS OR SUITS THAT MAY ARISE DURING CONSTRUCTION OR ANYTIME THEREAFTER.

SCALE:
SEE PLAN

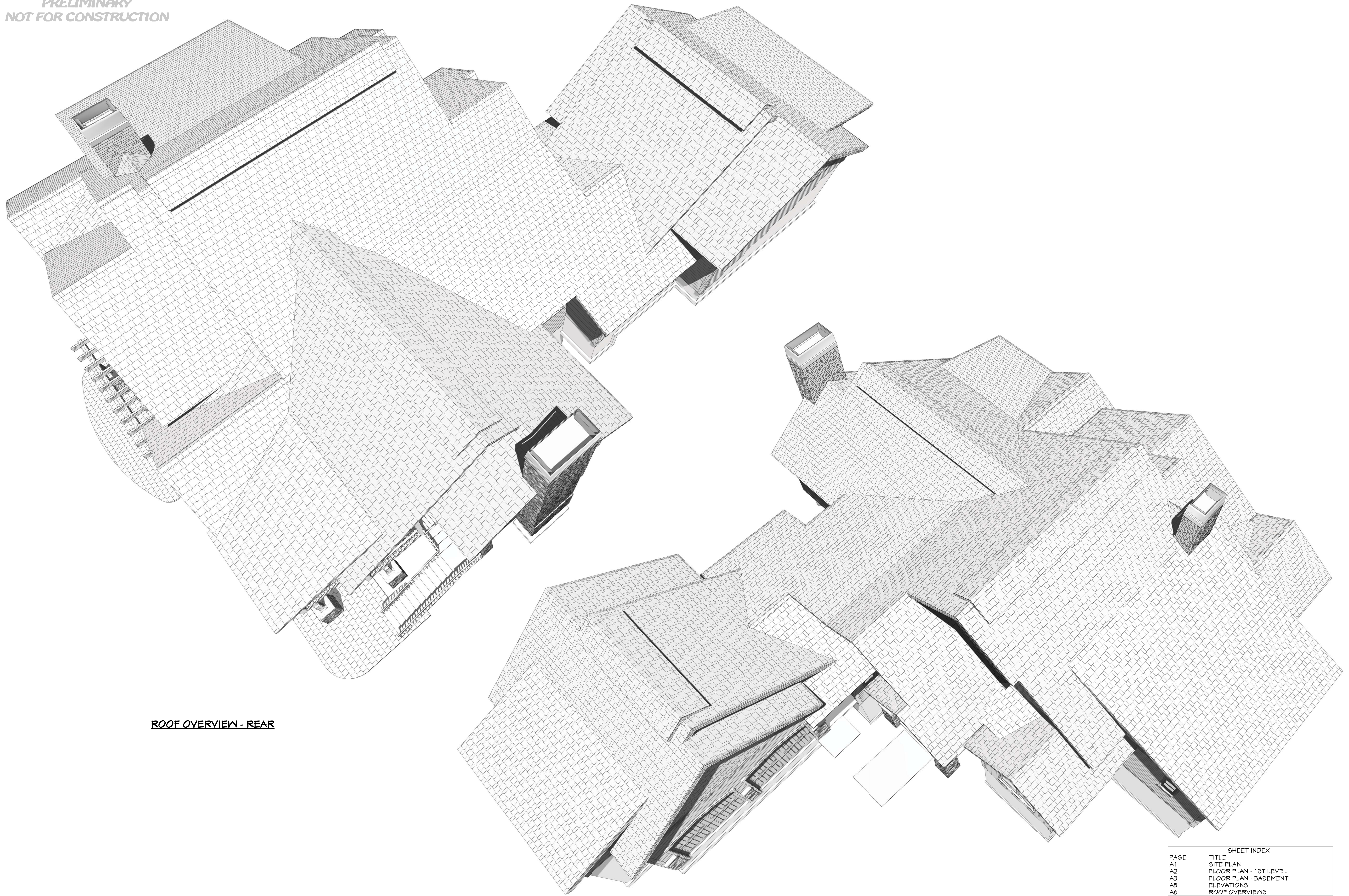
INITIAL DATE: 6/30/2017
PRINT DATE: 8/25/2017

DRAWN BY:
Steve

ELEVATIONS

SMC Design
SMC Design
208.249.7288
Nampa, ID

SHEET NUMBER
A5
PAGE 5 OF 6




ROOF OVERVIEW - REAR

ROOF OVERVIEW - FRONT

PAGE	SHEET INDEX
A1	TITLE
A2	SITE PLAN
A3	FLOOR PLAN - 1ST LEVEL
A5	FLOOR PLAN - BASEMENT
A5	ELEVATIONS
A6	ROOF OVERVIEWS

PROJECT NO.
17-038

7 BDRM 7-1/2 BATH FOR MILLER

PINETOP KING'S PINES ESTATES 1 - LOT #5 BLK #1 MCCALL, ID
CONTRACTOR TO VERIFY ALL DETAILS, DIMENSIONS, AND SPECIFICATIONS PRIOR TO CONSTRUCTION. AND REPORT ANY OMISSIONS AND/OR ERRORS TO SMC DESIGN. THE PURCHASER OR BUILDER OF THIS PLAN RELEASES SMC DESIGN FROM ANY CLAIMS, LITIGATIONS OR SUITS THAT MAY ARISE DURING CONSTRUCTION OR ANYTIME THEREAFTER.

SCALE: SEE PLAN
 INITIAL DATE: 6/30/2011
 PRINT DATE: 9/25/2011
 DRAWN BY: Steve
ROOF OVERVIEWS


 SMC Design
 208.249.7288
 Nampa, ID

SHEET NUMBER
A6
 PAGE 6 OF 6