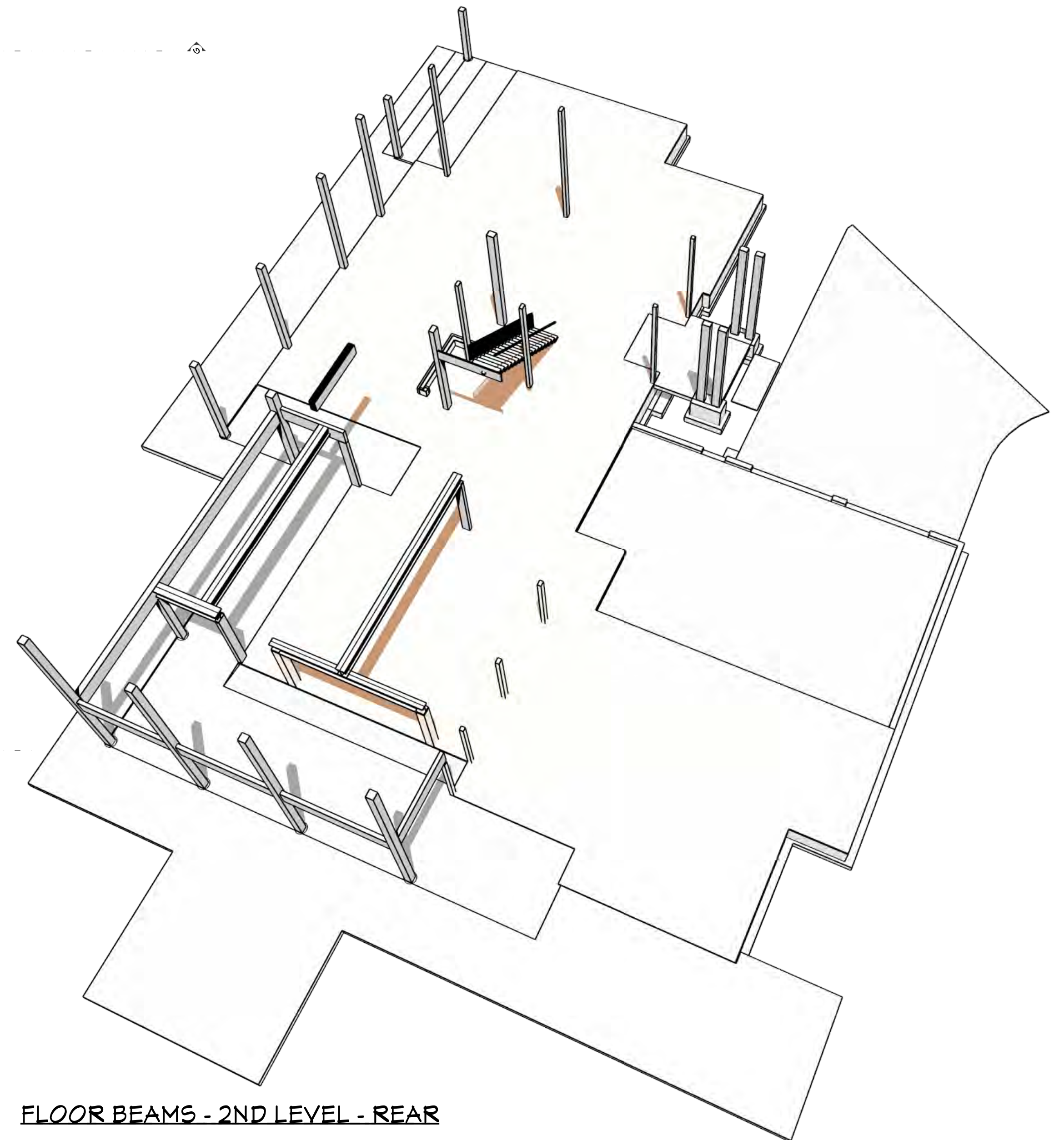
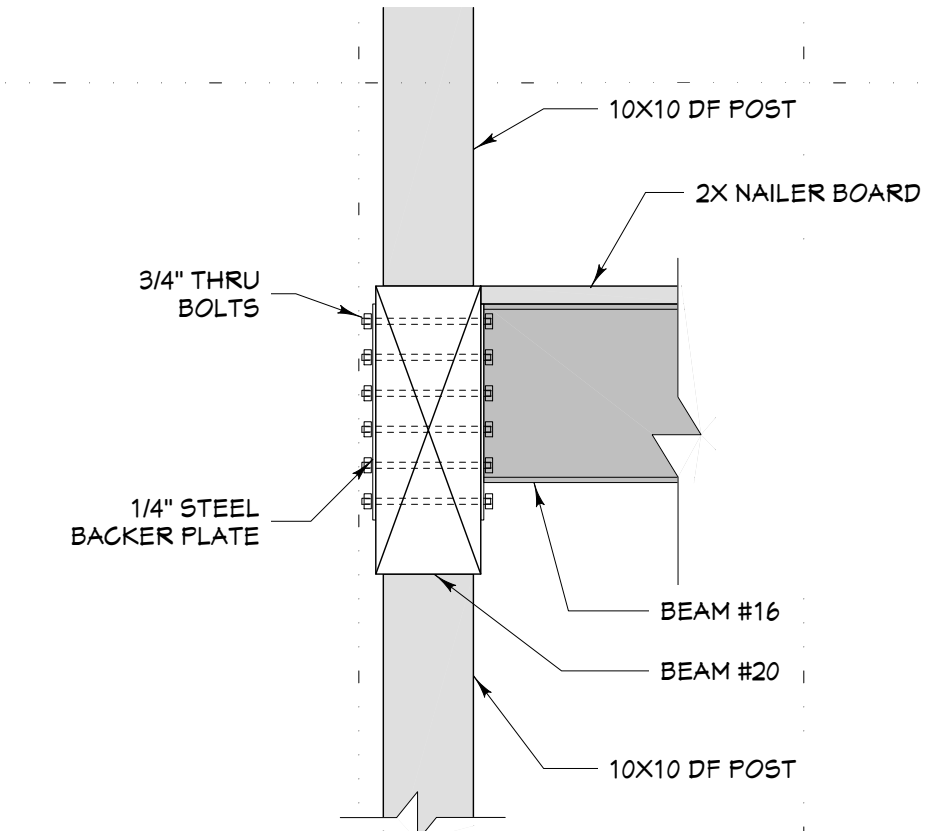


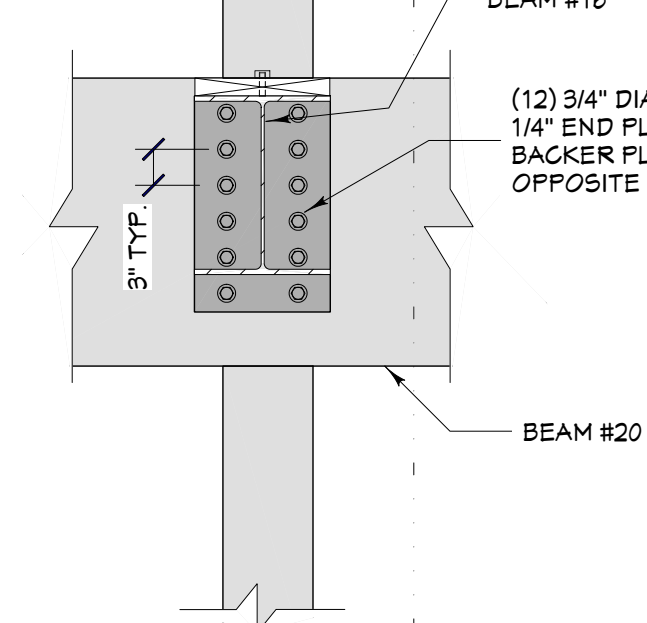
FLOOR BEAMS - 2ND LEVEL - FRONT



FLOOR BEAMS - 2ND LEVEL - REAR

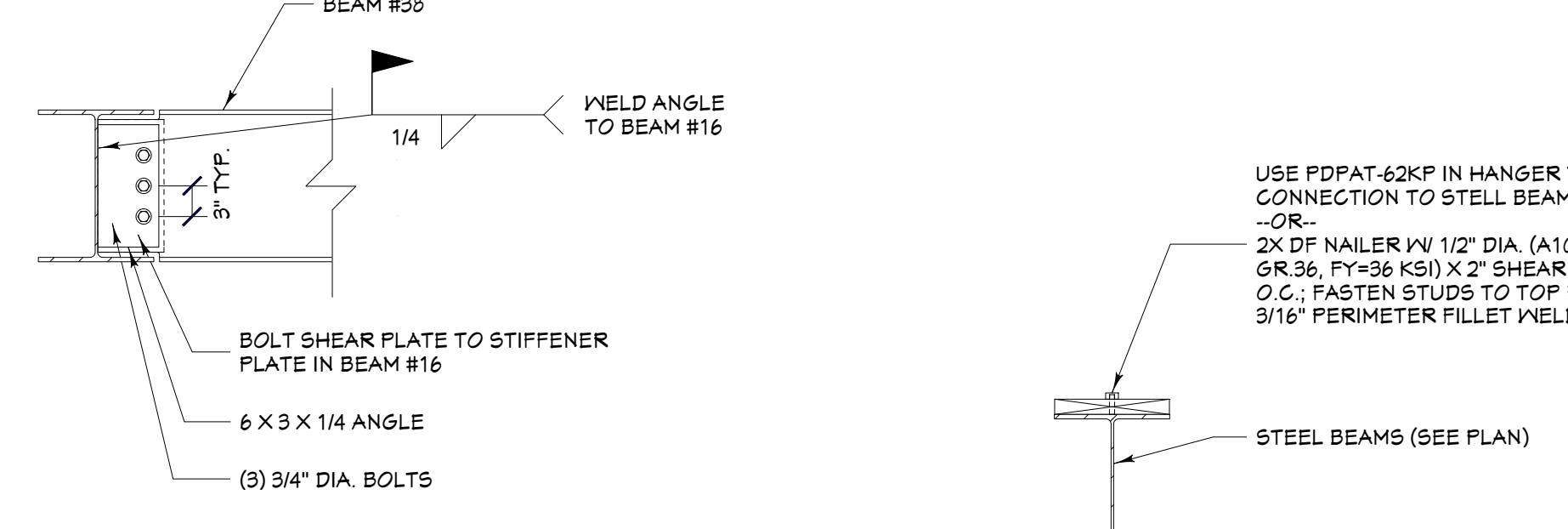


BEAM #16 TO BEAM #20 CONNECTION
SCALE: 3/4" = 1'-0"



NOTES:
ALWAYS CONFIRM ALL MEMBER SIZES WITH PLANS, SECTIONS, ELEVATIONS, DETAILS ETC.
MEMBERS ARE MEASURED AT THE CENTERLINE. ADDITIONAL LENGTH WILL BE REQUIRED FOR PITCH CUTS, SEAT CUTS, HALF-LAP JOINTS ETC.
ALWAYS ORDER MEMBERS WITH ADDITIONAL LENGTH FOR TRIMMING AND REAL WORLD ADJUSTMENTS.
ALL MEMBERS ARE #1 U.N.O.

FLOOR BEAMS - 2ND LEVEL 1/4" = 1'-0"



BEAM #30 TO BEAM #16 CONNECTION
SCALE: 3/4" = 1'-0"

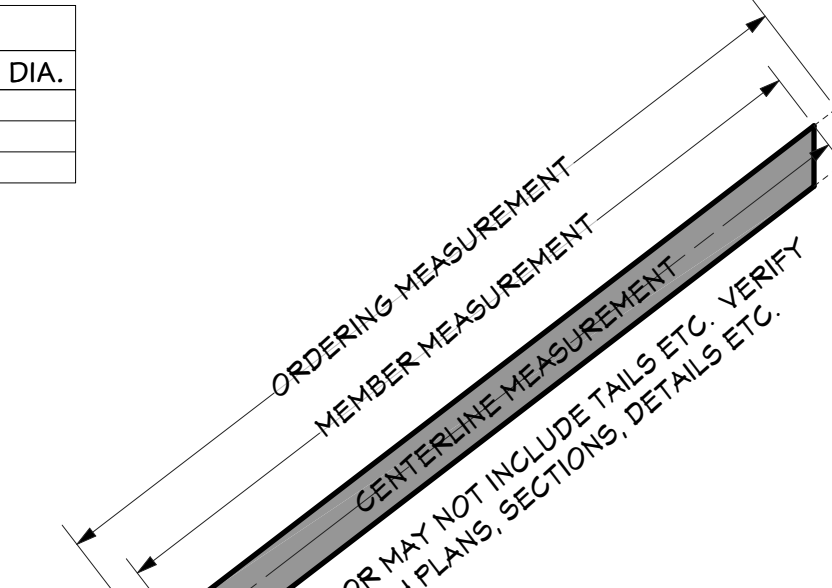
NAILER BOARD @ STEEL BEAM
SCALE: 3/4" = 1'-0"

STEEL BEAM CONNECTION SCHEDULE

BEAM DEPTH	L3X3 (A36) ANGLE	FILLET WELD SIZE # OF BOLTS AND DIA.
2\"/>		

MEMBER SCHEDULE

CALLOUT	MODEL	TOP NAILS	SEAT	MEMBER NAILS	FACE NAILS
R01	FAB-0001	N/A	2\"/>		



HEADER SCHEDULE

NO.	TYPE
H01	(1) 2\"/>

BEAM SCHEDULE

NO.	FLR	FLY(YS)	TOP/SEA	MEMBER	QTR LG	1/2 BEAM	BEAM	CALC #
B01	2	1	1	10-218 3/8 X 12 SILLUM - VSPD	61' 5 1/2"	27' 1 1/8"	29' 3 3/8"	2
B02	2	1	1	10-248 3/4 X 12 SILLUM - VSPD	61' 5 1/2"	27' 1 1/8"	29' 3 3/8"	2
B03	2	1	1	10-218 3/8 X 12 SILLUM - VSPD	61' 5 1/2"	27' 1 1/8"	29' 3 3/8"	2
B04	2	1	1	10-248 3/4 X 12 SILLUM - VSPD	61' 5 1/2"	27' 1 1/8"	29' 3 3/8"	2
B05	2	1	1	10-218 3/8 X 12 SILLUM - VSPD	61' 5 1/2"	27' 1 1/8"	29' 3 3/8"	2
B06	2	1	1	10-248 3/4 X 12 SILLUM - VSPD	61' 5 1/2"	27' 1 1/8"	29' 3 3/8"	2
B07	2	1	1	10-218 3/8 X 12 SILLUM - VSPD	61' 5 1/2"	27' 1 1/8"	29' 3 3/8"	2
B08	2	1	1	10-248 3/4 X 12 SILLUM - VSPD	61' 5 1/2"	27' 1 1/8"	29' 3 3/8"	2
B09	2	1	1	10-218 3/8 X 12 SILLUM - VSPD	61' 5 1/2"	27' 1 1/8"	29' 3 3/8"	2
B10	2	1	1	10-248 3/4 X 12 SILLUM - VSPD	61' 5 1/2"	27' 1 1/8"	29' 3 3/8"	2
B11	2	1	1	10-218 3/8 X 12 SILLUM - VSPD	61' 5 1/2"	27' 1 1/8"	29' 3 3/8"	2
B12	1	1	1	10-218 3/8 X 12 SILLUM - VSPD	61' 5 1/2"	27' 1 1/8"	29' 3 3/8"	2
B13	1	1	1	10-248 3/4 X 12 SILLUM - VSPD	61' 5 1/2"	27' 1 1/8"	29' 3 3/8"	2
B14	1	1	1	10-218 3/8 X 12 SILLUM - VSPD	61' 5 1/2"	27' 1 1/8"	29' 3 3/8"	2
B15	1	1	1	10-248 3/4 X 12 SILLUM - VSPD	61' 5 1/2"	27' 1 1/8"	29' 3 3/8"	2
B16	1	1	1	10-218 3/8 X 12 SILLUM - VSPD	61' 5 1/2"	27' 1 1/8"	29' 3 3/8"	2
B17	1	1	1	10-248 3/4 X 12 SILLUM - VSPD	61' 5 1/2"	27' 1 1/8"	29' 3 3/8"	2
B18	1	1	1	10-218 3/8 X 12 SILLUM - VSPD	61' 5 1/2"	27' 1 1/8"	29' 3 3/8"	2
B19	1	1	1	10-248 3/4 X 12 SILLUM - VSPD	61' 5 1/2"	27' 1 1/8"	29' 3 3/8"	2
B20	1	1	1	10-218 3/8 X 12 SILLUM - VSPD	61' 5 1/2"	27' 1 1/8"	29' 3 3/8"	2
B21	1	1	1	10-248 3/4 X 12 SILLUM - VSPD	61' 5 1/2"	27' 1 1/8"	29' 3 3/8"	2
B22	1	1	1	10-218 3/8 X 12 SILLUM - VSPD	61' 5 1/2"	27' 1 1/8"	29' 3 3/8"	2
B23	1	1	1	10-248 3/4 X 12 SILLUM - VSPD	61' 5 1/2"	27' 1 1/8"	29' 3 3/8"	2
B24	1	1	1	10-218 3/8 X 12 SILLUM - VSPD	61' 5 1/2"	27' 1 1/8"	29' 3 3/8"	2
B25	1	1	1	10-248 3/4 X 12 SILLUM - VSPD	61' 5 1/2"	27' 1 1/8"	29' 3 3/8"	2
B26	1	1	1	10-218 3/8 X 12 SILLUM - VSPD	61' 5 1/2"	27' 1 1/8"	29' 3 3/8"	2
B27	1	1	1	10-248 3/4 X 12 SILLUM - VSPD	61' 5 1/2"	27' 1 1/8"	29' 3 3/8"	2
B28	1	1	1	10-218 3/8 X 12 SILLUM - VSPD	61' 5 1/2"	27' 1 1/8"	29' 3 3/8"	2
B29	1	1	1	10-248 3/4 X 12 SILLUM - VSPD	61' 5 1/2"	27' 1 1/8"	29' 3 3/8"	2
B30	1	1	1	10-218 3/8 X 12 SILLUM - VSPD	61' 5 1/2"	27' 1 1/8"	29' 3 3/8"	2
B31	1	1	1	10-248 3/4 X 12 SILLUM - VSPD	61' 5 1/2"	27' 1 1/8"	29' 3 3/8"	2
B32	1	1	1	10-218 3/8 X 12 SILLUM - VSPD	61' 5 1/2"	27' 1 1/8"	29' 3 3/8"	2
B33	1	1	1	10-248 3/4 X 12 SILLUM - VSPD	61' 5 1/2"	27' 1 1/8"	29' 3 3/8"	2
B34	1	1	1	10-218 3/8 X 12 SILLUM - VSPD	61' 5 1/2"	27' 1 1/8"	29' 3 3/8"	2
B35	1	1	1	10-248 3/4 X 12 SILLUM - VSPD	61' 5 1/2"	27' 1 1/8"	29' 3 3/8"	2
B36	1	1	1	10-218 3/8 X 12 SILLUM - VSPD	61' 5 1/2"	27' 1 1/8"	29' 3 3/8"	2
B37	1	1	1	10-248 3/4 X 12 SILLUM - VSPD	61' 5 1/2"	27' 1 1/8"	29' 3 3/8"	2
B38	1	1	1	10-218 3/8 X 12 SILLUM - VSPD	61' 5 1/2"	27' 1 1/8"	29' 3 3/8"	2
B39	1	1	1	10-248 3/4 X 12 SILLUM - VSPD	61' 5 1/2"	27' 1 1/8"	29' 3 3/8"	2
B40	1	1	1	10-218 3/8 X 12 SILLUM - VSPD	61' 5 1/2"	27' 1 1/8"	29' 3 3/8"	2
B41	1	1	1	10-248 3/4 X 12 SILLUM - VSPD	61' 5 1/2"	27' 1 1/8"	29' 3 3/8"	2
B42	1	1	1	10-218 3/8 X 12 SILLUM - VSPD	61' 5 1/2"	27' 1 1/8"	29' 3 3/8"	2
B43	1	1	1	10-248 3/4 X 12 SILLUM - VSPD	61' 5 1/2"	27' 1 1/8"	29' 3 3/8"	2
B44	1	1	1	10-218 3/8 X 12 SILLUM - VSPD	61' 5 1/2"	27' 1 1/8"	29' 3 3/8"	2
B45	1	1	1	10-248 3/4 X 12 SILLUM - VSPD	61' 5 1/2"	27' 1 1/8"	29' 3 3/8"	2
B46	1	1	1	10-218 3/8 X 12 SILLUM - VSPD	61' 5 1/2"	27' 1 1/8"	29' 3 3/8"	2
B47	1	1	1	10-248 3/4 X 12 SILLUM - VSPD	61' 5 1/2"	27' 1 1/8"	29' 3 3/8"	2
B48	1	1	1	10-218 3/8 X 12 SILLUM - VSPD	61' 5 1/2"	27' 1 1/8"	29' 3 3/8"	2
B49	1	1	1	10-248 3/4 X 12 SILLUM - VSPD	61' 5 1/2"	27' 1 1/8"	29' 3 3/8"	2
B50	1	1	1	10-218 3/8 X 12 SILLUM - VSPD	61' 5 1/2"	27' 1 1/8"	29' 3 3/8"	2

PAGE SHEET INDEX

PAGE	TITLE
A1	FLOOR BEAMS- 2ND LEVEL
A2	ROOF BEAMS- 1ST LEVEL
A3	ROOF BEAMS- 2ND LEVEL
A4	ROOF BEAMS- OVERVIEW
A5	ROOF LAYOUT - 1ST LEVEL
A6	ROOF LAYOUT - 2ND LEVEL
A7	ROOF LAYOUT - OVERVIEW

CONTRACTOR TO VERIFY ALL DETAILS, DIMENSIONS, AND SPECIFICATIONS PRIOR TO CONSTRUCTION, AND REPORT ANY OMISSIONS AND/OR ERRORS TO SMC DESIGN. THE PURCHASER OR BUILDER OF THIS PLAN RELEASES SMC DESIGN FROM ANY CLAIMS, LITIGATIONS OR SUITS THAT MAY ARISE DURING CONSTRUCTION OR ANY TIME THEREAFTER.

PROJECT NO.
20-036

**3 BDRM 3 FULL BATH (2) 1/2 BATH FOR GEORGE & SHANA MONROE
REVISED ROOF LAYOUT - JOHNSON LN VALLEY CO, ID**

SHEET SIZE
ARCH E (36" x 48")

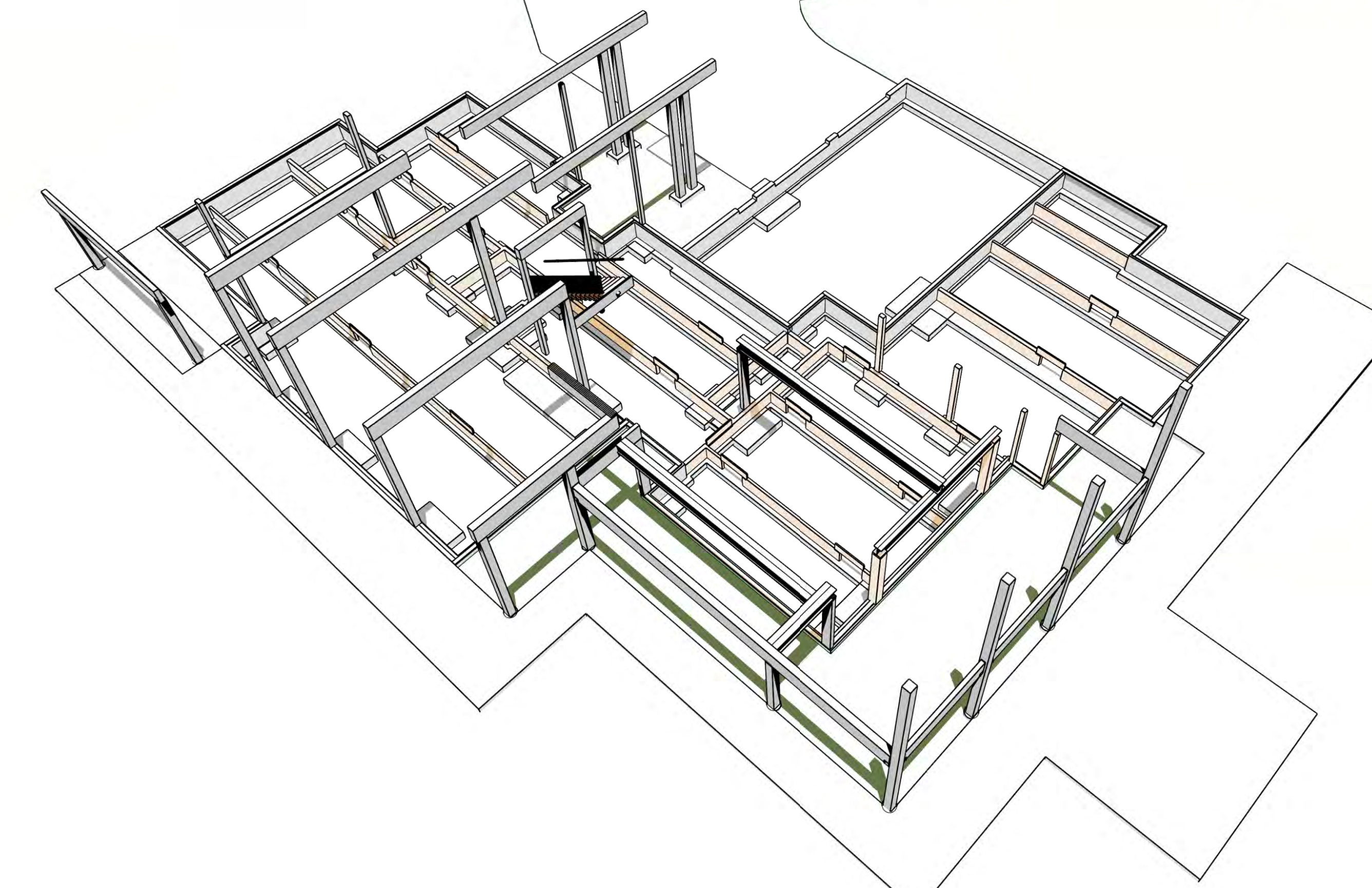
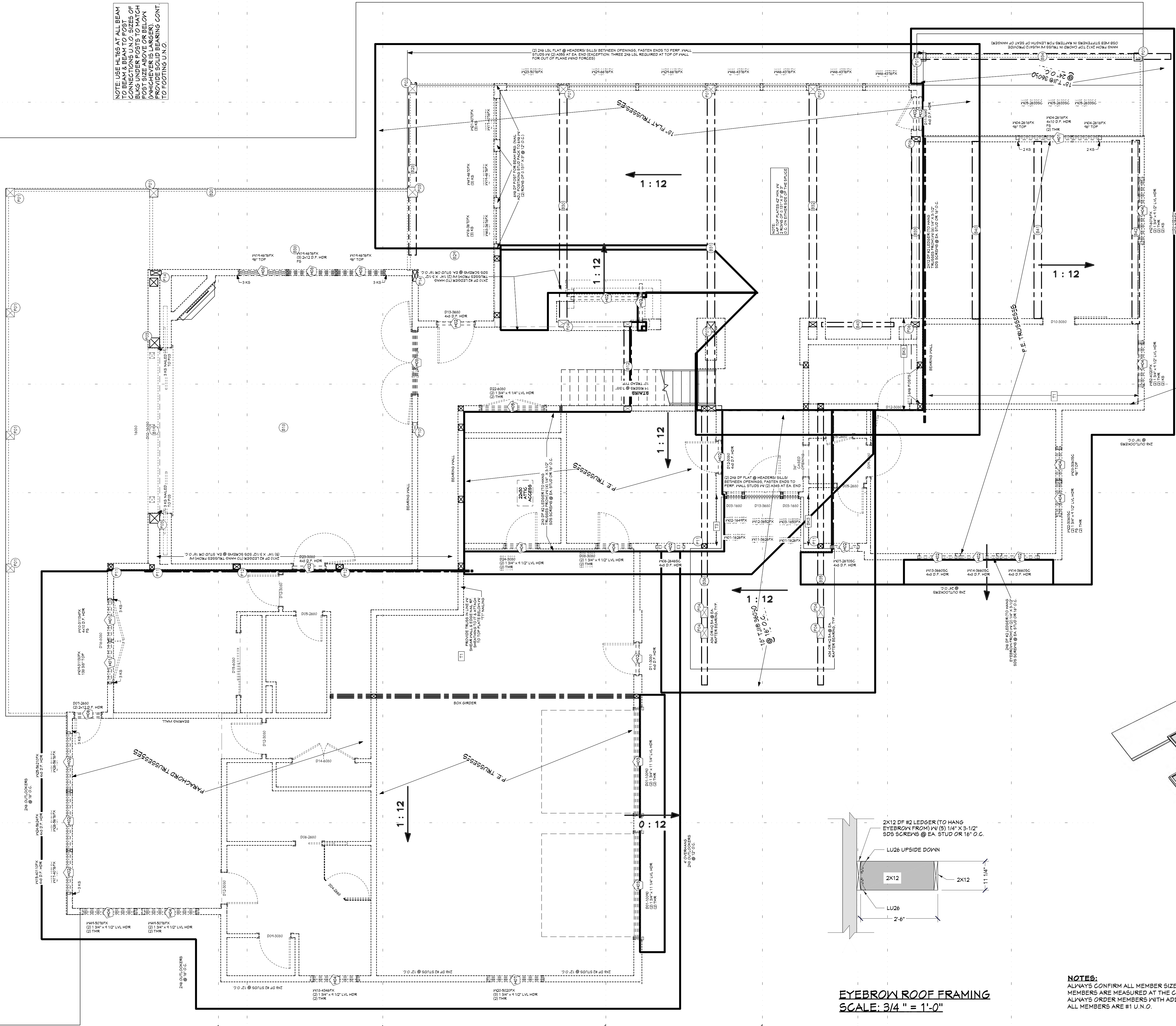
INITIAL DATE: 6/6/2020
PRINT DATE: 7/1/2022

DRAWN BY: Steve

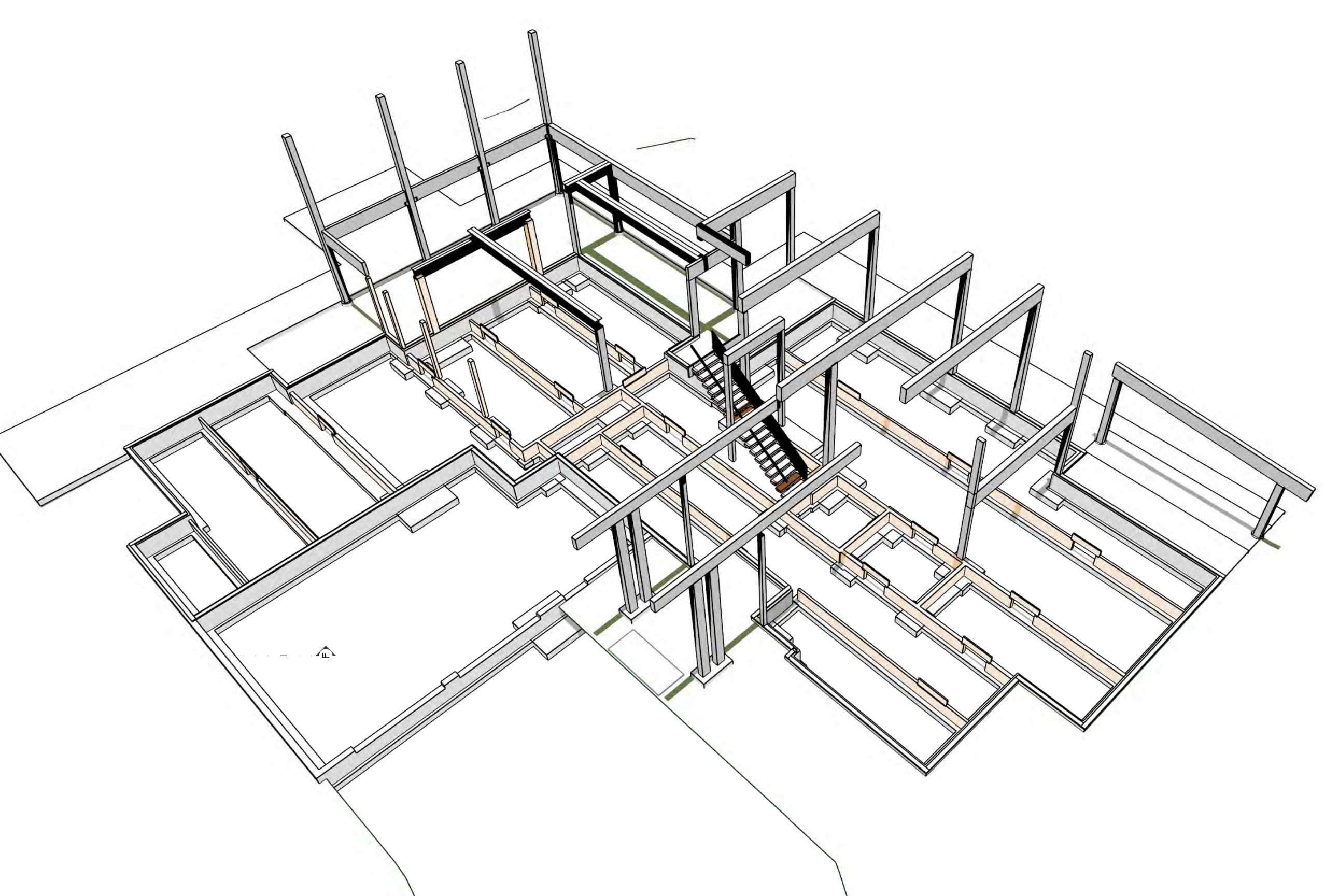
SHEET NUMBER
A1
PAGE 1 OF 7

SMC Design
208.244.7286
Nampa, ID

NOTE: USE NAILS AT ALL BEAM CONNECTIONS UNLESS OTHERWISE SPECIFIED. MEMBER SIZES ARE SHOWN IN THIS PLAN. REFER TO ALL OTHER DRAWINGS FOR MEMBER SIZES AND CONNECTIONS. REFER TO ALL OTHER DRAWINGS FOR MEMBER SIZES AND CONNECTIONS.



ROOF BEAMS - 1ST LEVEL - REAR

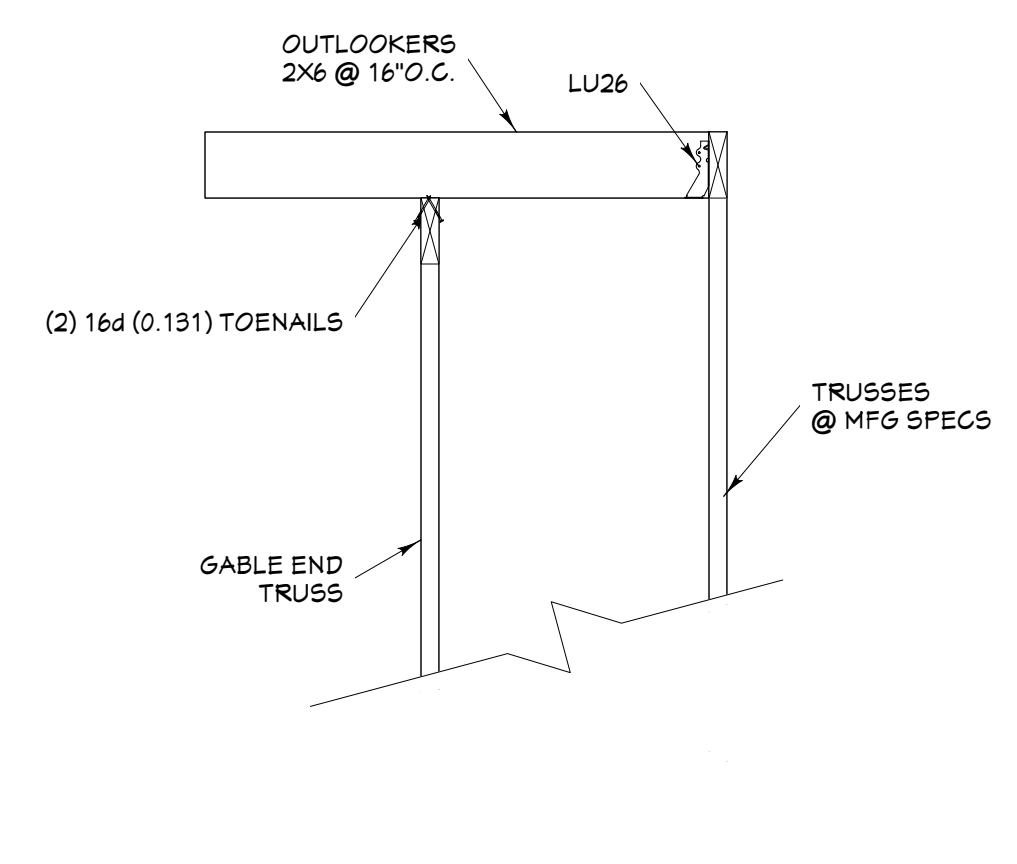


ROOF BEAMS - 1ST LEVEL - FRONT

NOTES: ALWAYS CONFIRM ALL MEMBER SIZES WITH PLANS, SECTIONS, ELEVATIONS, DETAILS, ETC. MEMBERS ARE MEASURED AT THE CENTERLINE. ADDITIONAL LENGTH WILL BE REQUIRED FOR FIT CUTS, SEAT CUTS, HALF-LAP JOINTS, ETC. ALWAYS ORDER MEMBERS WITH ADDITIONAL LENGTH FOR TRIMMING AND REAL WORLD ADJUSTMENTS. ALL MEMBERS ARE #1 U.N.O.

EYEBROW ROOF FRAMING SCALE: 3/4" = 1'-0"

ROOF LAYOUT - BEAMS - 1ST LEVEL 1/4" = 1'-0"



OUTLOOKER DETAIL SCALE: 3/4" = 1'-0"

ROOF MATERIALS
RIDGE CAP 11 Ft
VALLEY FLASHING 15 Ft
90 DEG. FLASHING 64 Ft
BEND TO SLOPE FLASHING 150 Ft
METAL ROOFING 9380 Sq. Ft.
RIDGE VENT 280 EP
OSB 280 EP
GABLE FASCIA 445 Ft
FAVE FASCIA 495 Ft
DRIP EDGE 940 Ft

POST SCHEDULE table with columns: NO., QTY, SPEC., DIM., NOTES.

STEEL BEAM CONNECTION SCHEDULE table with columns: BEAM DEPTH, L3X3 (A36) ANGLE, FILLET WELD SIZE # OF BOLTS AND DIA.

MEMBER SCHEDULE table with columns: CALLOUT, MODEL, TOP NAILS, BEAT, MEMBER NAILS, FACE NAILS.

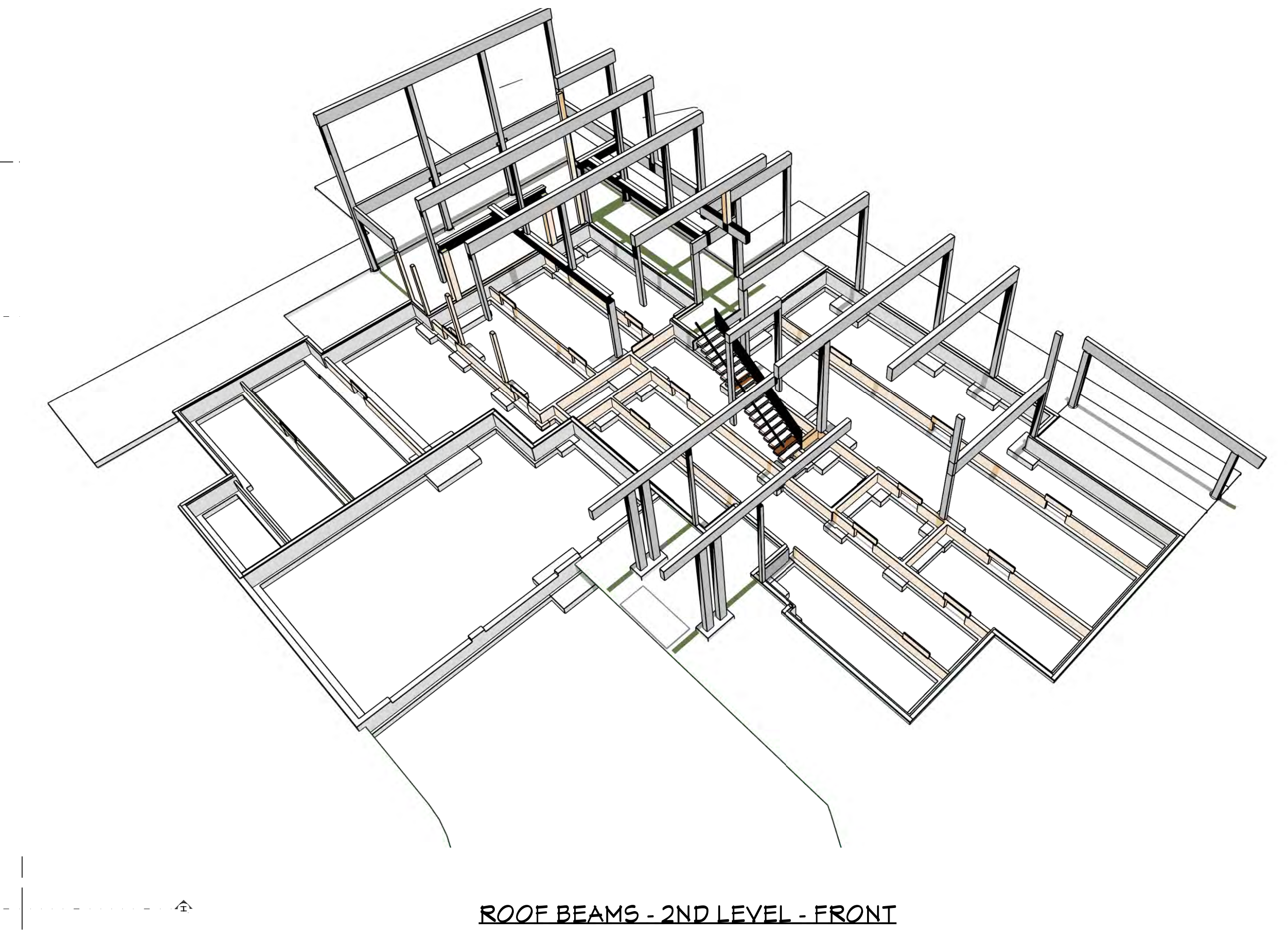
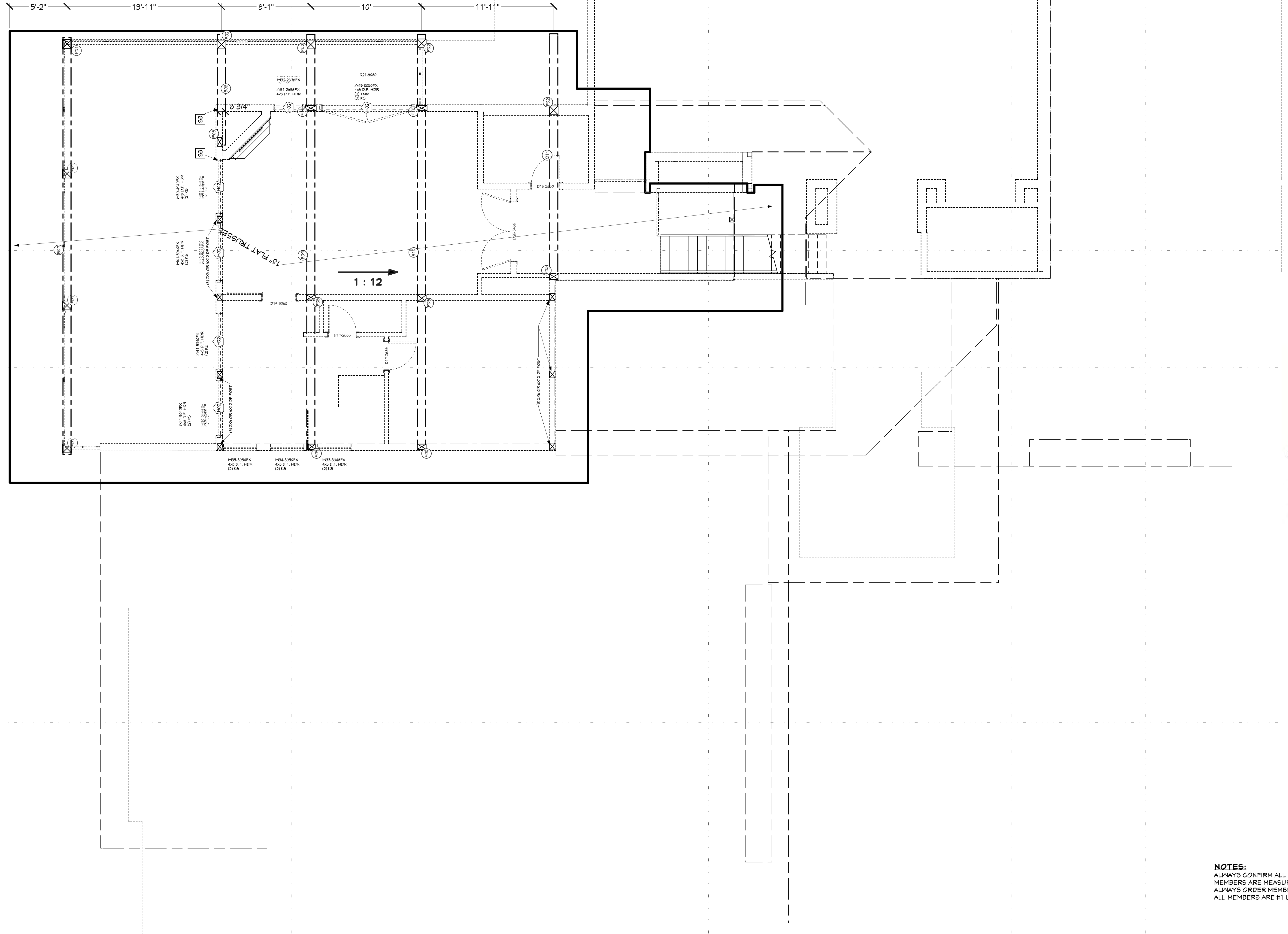
HEADER SCHEDULE table with columns: NO., TYPE, DIM., SPEC., DIM., NOTES.

BEAM SCHEDULE table with columns: NO., FLR., FIN. (YES), TOP SPEC., BEAM SPEC., LxH, LVL, T.O. BEAM, B.O. BEAM, GABLE #.

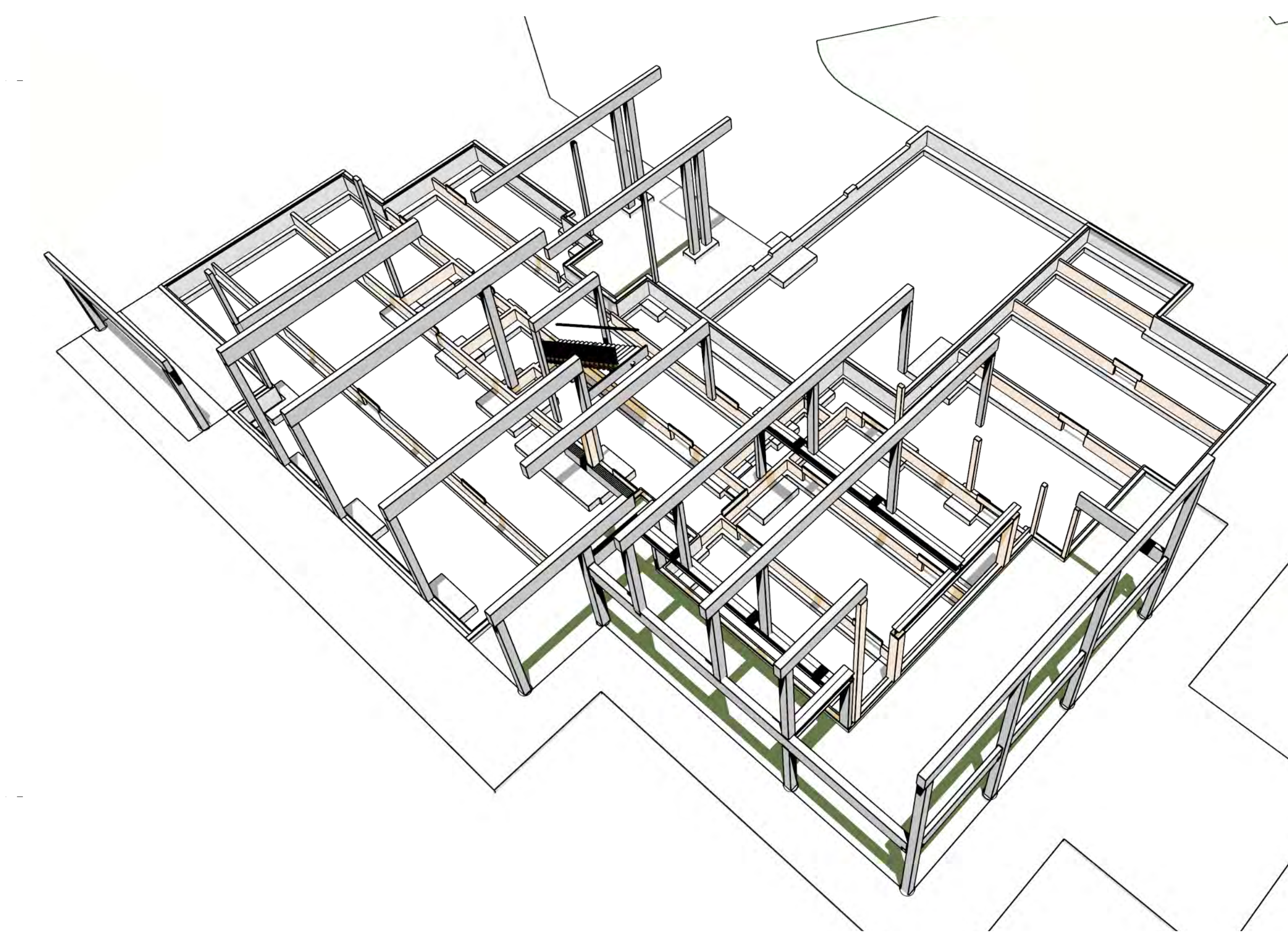
SHEET INDEX table with columns: PAGE, TITLE.

Project information: 3 BDRM 3 FULL BATH (2) 1/2 BATH FOR GEORGE & SHANA MONROE, REVISED ROOF LAYOUT - JOHNSON LN VALLEY CO., ID. Includes sheet size, date, and SMC Design logo.

NOTE: USE HUBS AT ALL BEAM TO BEAM AND BEAM TO POST CONNECTIONS. HUBS SHOULD BE PLACED UNDER PORTS TO MATCH UNLESS OTHERWISE NOTED. PROVIDE SLOD DRAWING CONT. TO FLOORING S.W.D.



ROOF BEAMS - 2ND LEVEL - FRONT



ROOF BEAMS - 2ND LEVEL - REAR

NOTES:
ALWAYS CONFIRM ALL MEMBER SIZES WITH PLANS, SECTIONS, ELEVATIONS, DETAILS, ETC.
MEMBERS ARE MEASURED AT THE CENTERLINE. ADDITIONAL LENGTH WILL BE REQUIRED FOR FITCH CUTS, SEAT CUTS, HALF-LAP JOINTS, ETC.
ALWAYS ORDER MEMBERS WITH ADDITIONAL LENGTH FOR TRIMMING AND REAL WORLD ADJUSTMENTS.
ALL MEMBERS ARE #1 U.N.O.

PROJECT NO.
20-036

3 BDRM 3 FULL BATH (2) 1/2 BATH FOR GEORGE & SHANA MONROE
REVISED ROOF LAYOUT - JOHNSON LN VALLEY CO., ID

CONTRACTOR TO VERIFY ALL DETAILS, DIMENSIONS, AND SPECIFICATIONS PRIOR TO CONSTRUCTION, AND REPORT ANY OMISSIONS AND/OR ERRORS TO SMC DESIGN. THE PURCHASER OR BUILDER OF THIS PLAN RELEASES SMC DESIGN FROM ANY CLAIMS, LITIGATIONS OR SUITS THAT MAY ARISE DURING CONSTRUCTION OR ANYTIME THEREAFTER.

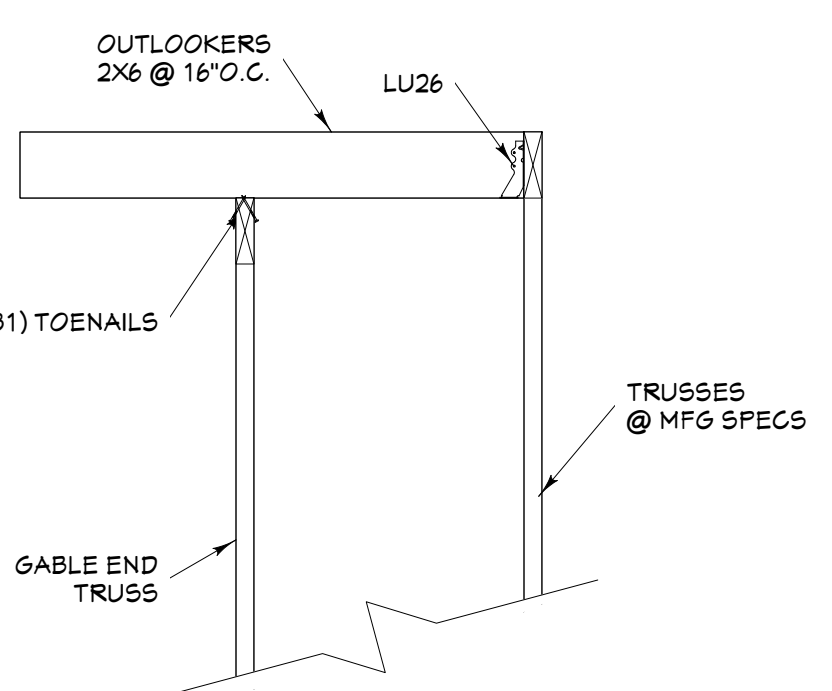
SHEET SIZE
ARCH E (36" x 48")

INITIAL DATE: 6/6/2020
PRINT DATE: 7/1/2022

DRAWN BY: Steve

SMC Design
208.244.1288
Nampa, ID

SHEET NUMBER
A3
PAGE 3 OF 7



ROOF LAYOUT - BEAMS - 2ND LEVEL 1/4" = 1'-0"

ROOF MATERIALS
RIDGE CAP 11 Ft.
VALLEY FLASHING 15 Ft.
90 DEG. FLASHING 64 Ft.
BEND TO SLOPE FLASHING 150 Ft.
RIDGE VENT 12 Ft.
METAL ROOFING 9380 Sq. Ft.
OSB 280 EP
GABLE FASCIA 445 Ft.
EAVE FASCIA 453 Ft.
DRIP EDGE 940 Ft.

POST SCHEDULE

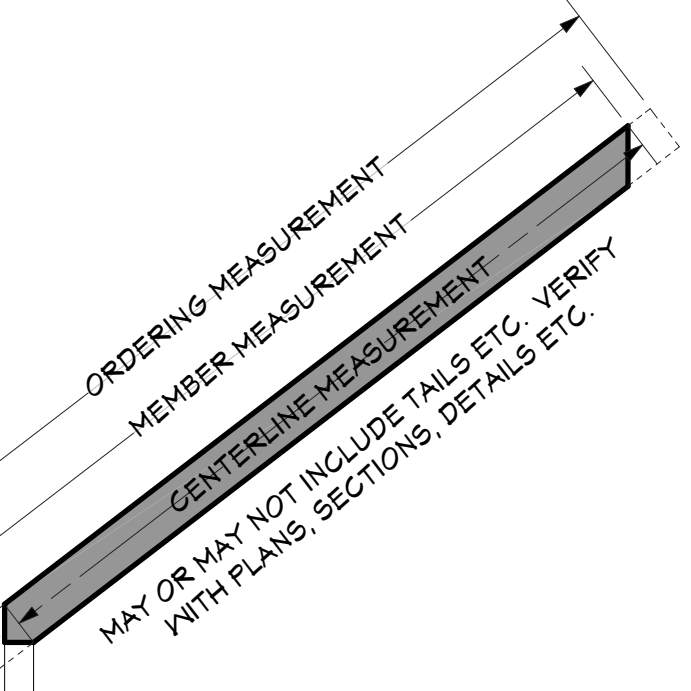
NO.	FLR	TYPE	SIZE	QTY
P01	1	1	10x10 D.F. #2	2
P02	1	1	10x10 D.F. #2	2
P03	1	1	10x10 D.F. #2	2
P04	1	1	10x10 D.F. #2	2
P05	1	1	10x10 D.F. #2	2
P06	1	1	10x10 D.F. #2	2
P07	1	1	10x10 D.F. #2	2
P08	1	1	10x10 D.F. #2	2
P09	1	1	10x10 D.F. #2	2
P10	1	1	10x10 D.F. #2	2
P11	1	1	10x10 D.F. #2	2
P12	1	1	10x10 D.F. #2	2
P13	1	1	10x10 D.F. #2	2
P14	2	1	10x10 D.F. #2	2

STEEL BEAM CONNECTION SCHEDULE

BEAM DEPTH	L3X3 (A36) ANGLE	FILLET WELD SIZE # OF BOLTS AND DIA.
2" x 14"	3/8"	1/4" (2) 3/4" DIA.
1.5" x 6"	3/8"	1/4" (2) 3/4" DIA.

HEADER SCHEDULE

NO.	FLR	TYPE	SIZE	QTY
H01	1	1	10x10 D.F. #2	2
H02	1	1	10x10 D.F. #2	2
H03	1	1	10x10 D.F. #2	2
H04	1	1	10x10 D.F. #2	2
H05	1	1	10x10 D.F. #2	2
H06	1	1	10x10 D.F. #2	2
H07	1	1	10x10 D.F. #2	2
H08	1	1	10x10 D.F. #2	2
H09	1	1	10x10 D.F. #2	2
H10	1	1	10x10 D.F. #2	2
H11	1	1	10x10 D.F. #2	2
H12	1	1	10x10 D.F. #2	2
H13	1	1	10x10 D.F. #2	2
H14	1	1	10x10 D.F. #2	2
H15	1	1	10x10 D.F. #2	2
H16	1	1	10x10 D.F. #2	2
H17	1	1	10x10 D.F. #2	2
H18	1	1	10x10 D.F. #2	2
H19	1	1	10x10 D.F. #2	2
H20	1	1	10x10 D.F. #2	2
H21	1	1	10x10 D.F. #2	2
H22	1	1	10x10 D.F. #2	2
H23	1	1	10x10 D.F. #2	2
H24	1	1	10x10 D.F. #2	2
H25	1	1	10x10 D.F. #2	2
H26	1	1	10x10 D.F. #2	2
H27	1	1	10x10 D.F. #2	2
H28	1	1	10x10 D.F. #2	2
H29	1	1	10x10 D.F. #2	2
H30	1	1	10x10 D.F. #2	2
H31	1	1	10x10 D.F. #2	2
H32	1	1	10x10 D.F. #2	2
H33	1	1	10x10 D.F. #2	2
H34	1	1	10x10 D.F. #2	2
H35	1	1	10x10 D.F. #2	2
H36	1	1	10x10 D.F. #2	2
H37	1	1	10x10 D.F. #2	2
H38	1	1	10x10 D.F. #2	2
H39	1	1	10x10 D.F. #2	2
H40	1	1	10x10 D.F. #2	2



OUTLOOKER DETAIL SCALE: 3/4" = 1'-0"

SHEET INDEX

PAGE	TITLE
A1	FLOOR BEAMS - 2ND LEVEL
A2	ROOF BEAMS - 1ST LEVEL
A3	ROOF BEAMS - 2ND LEVEL
A4	ROOF BEAMS - OVERVIEW
A5	ROOF LAYOUT - 1ST LEVEL
A6	ROOF LAYOUT - 2ND LEVEL
A7	ROOF LAYOUT - OVERVIEW

BEAM SCHEDULE

NO.	FLR	TYPE	SIZE	QTY
B01	1	1	10x10 D.F. #2	2
B02	1	1	10x10 D.F. #2	2
B03	1	1	10x10 D.F. #2	2
B04	1	1	10x10 D.F. #2	2
B05	1	1	10x10 D.F. #2	2
B06	1	1	10x10 D.F. #2	2
B07	1	1	10x10 D.F. #2	2
B08	1	1	10x10 D.F. #2	2
B09	1	1	10x10 D.F. #2	2
B10	1	1	10x10 D.F. #2	2
B11	1	1	10x10 D.F. #2	2
B12	1	1	10x10 D.F. #2	2
B13	1	1	10x10 D.F. #2	2
B14	1	1	10x10 D.F. #2	2
B15	1	1	10x10 D.F. #2	2
B16	1	1	10x10 D.F. #2	2
B17	1	1	10x10 D.F. #2	2
B18	1	1	10x10 D.F. #2	2
B19	1	1	10x10 D.F. #2	2
B20	1	1	10x10 D.F. #2	2
B21	1	1	10x10 D.F. #2	2
B22	1	1	10x10 D.F. #2	2
B23	1	1	10x10 D.F. #2	2
B24	1	1	10x10 D.F. #2	2
B25	1	1	10x10 D.F. #2	2
B26	1	1	10x10 D.F. #2	2
B27	1	1	10x10 D.F. #2	2
B28	1	1	10x10 D.F. #2	2
B29	1	1	10x10 D.F. #2	2
B30	1	1	10x10 D.F. #2	2
B31	1	1	10x10 D.F. #2	2
B32	1	1	10x10 D.F. #2	2
B33	1	1	10x10 D.F. #2	2
B34	1	1	10x10 D.F. #2	2
B35	1	1	10x10 D.F. #2	2
B36	1	1	10x10 D.F. #2	2
B37	1	1	10x10 D.F. #2	2
B38	1	1	10x10 D.F. #2	2
B39	1	1	10x10 D.F. #2	2
B40	1	1	10x10 D.F. #2	2
B41	1	1	10x10 D.F. #2	2
B42	1	1	10x10 D.F. #2	2
B43	1	1	10x10 D.F. #2	2
B44	1	1	10x10 D.F. #2	2

