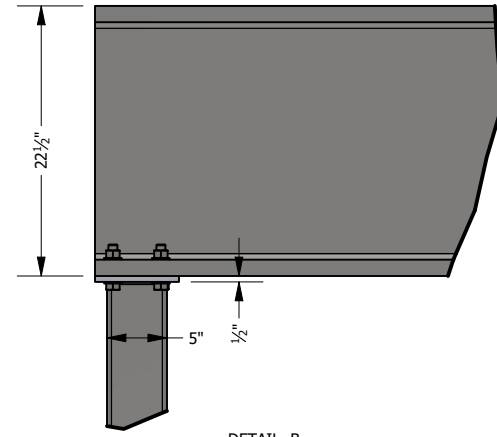
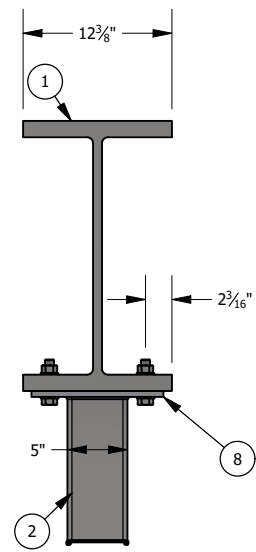
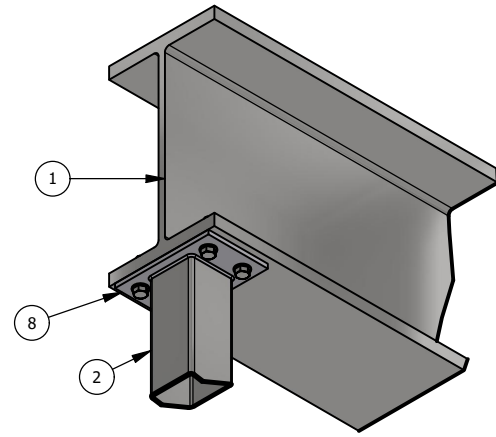
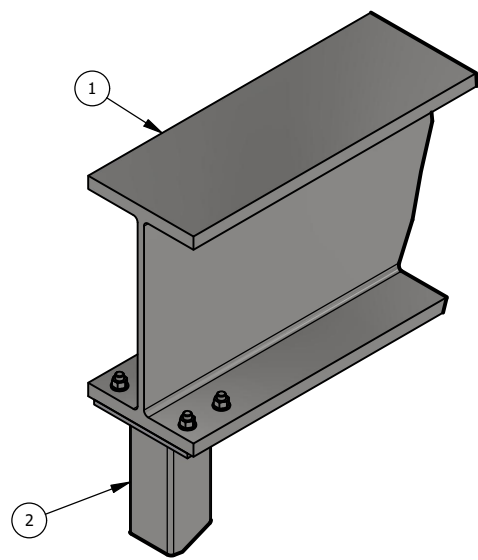


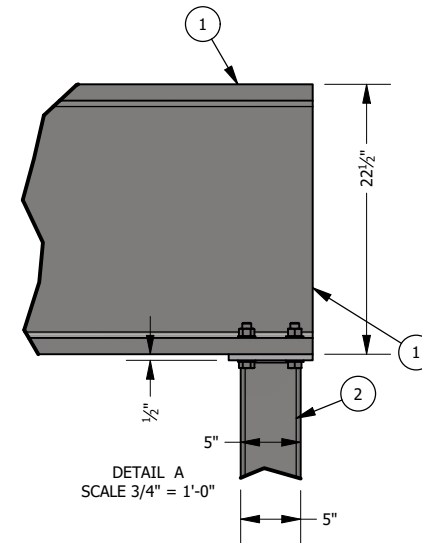
Table of Contents

25-003 Inventor - Combined Calculations

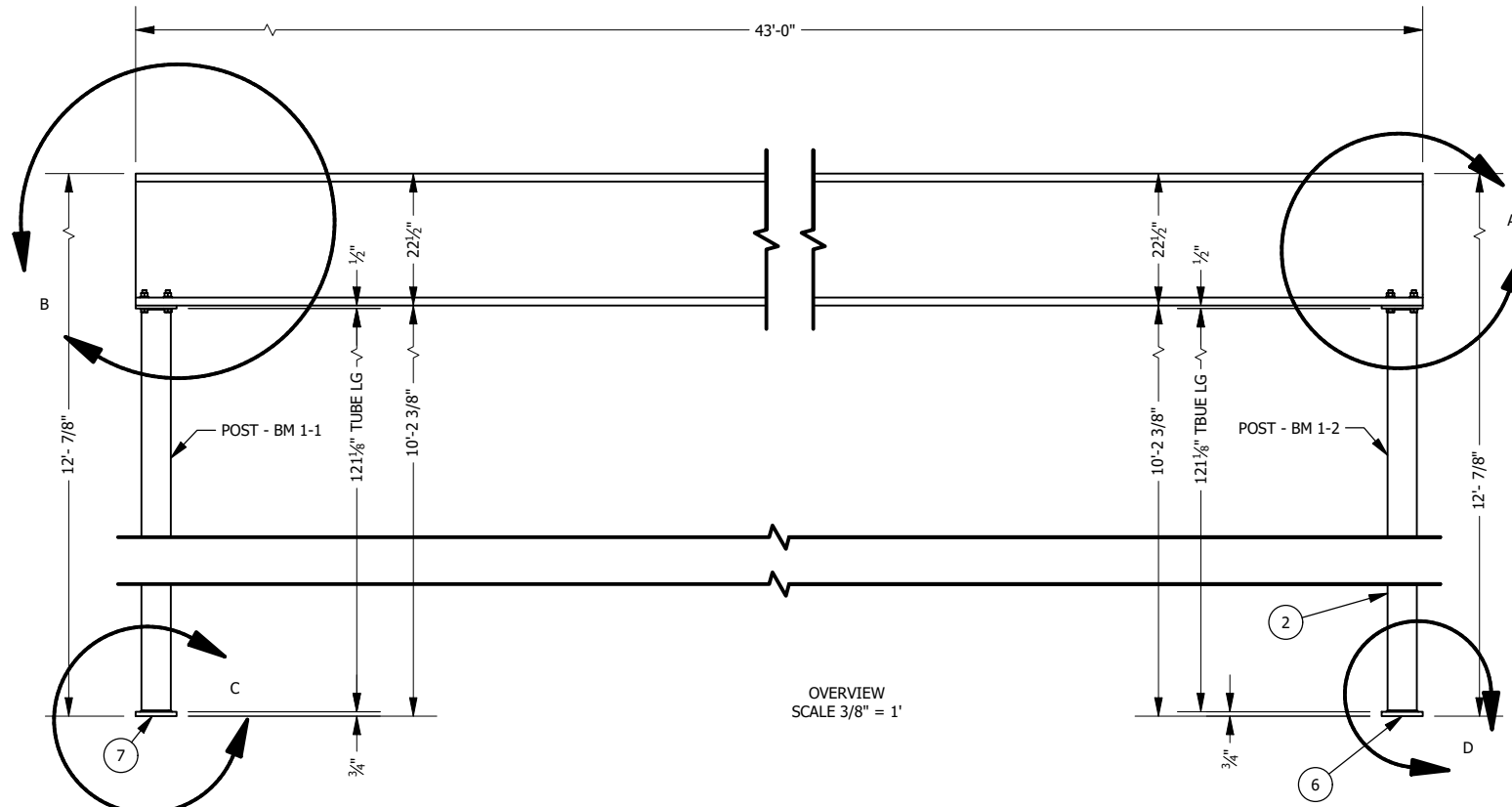
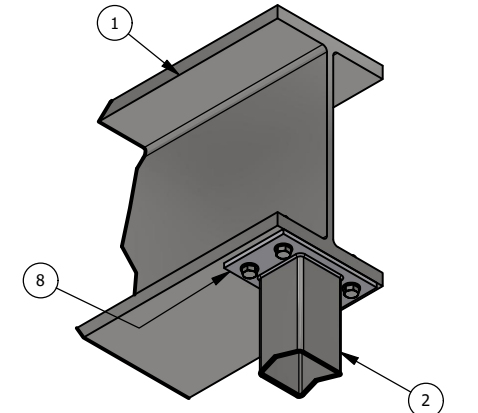
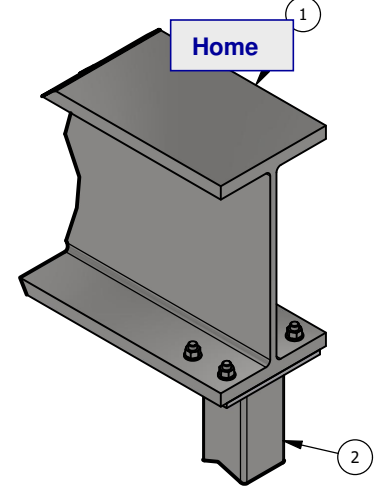
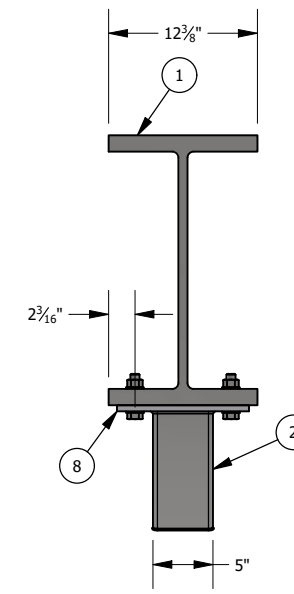
Section	Page
1. Beam 1	2
2. Beam 3	3
3. Beam 19	4
4. Column Bm 15	5
5. Column Bm 23-2	6
6. Column Bm 24-2	7
7. Column Bm 25-2	8
8. Column Bm 26-2	9
9. Column Bm 27-2	10
10. Column Bm 28-2	11
11. Column Bm 32	12
12. Column Bm 33	13
13. Moment Frame 1	14
14. Moment Frame 2	16



DETAIL B
SCALE 3/4" = 1'-0"

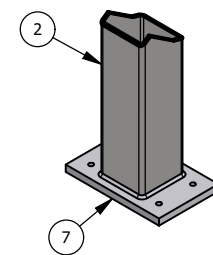


DETAIL A
SCALE 3/4" = 1'-0"

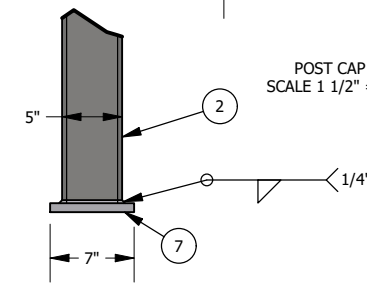


****FIELD VERIFY ALL CUT LENGTHS****

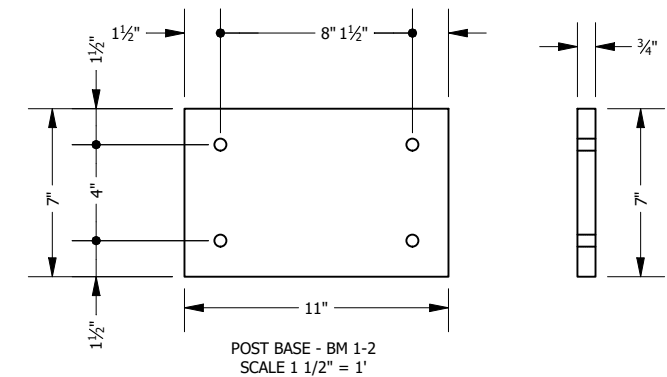
PARTS LIST			
ITEM	QTY	PART NUMBER	DESCRIPTION
1	516.000 in	AISC - W 21x166 - 516	W-Shape
2	242.250 in	AISC HSS - 5 x 5 x 3/16 - 121.125	Square tube
3	8	ANSI B18.2.2 - 3/4 - 10, HNI	Hex Nuts (Inch Series) Hex Nut
4	16	ANSI B18.22.1 - 3/4 - narrow - Type A	Plain Washer (Inch) Type A and B
5	8	ANSI/ASME B18.2.1 - 3/4-10 UNC - 3.25, HBI	Hex Bolt - UNC (Regular Thread - Inch)
6	1	POST BASE - BM 1-2	
7	1	POST BASE PLATE - BM 1-1	
8	2	POST CAP	



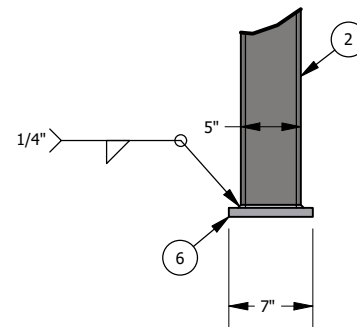
DETAIL C
SCALE 3/4" = 1'-0"



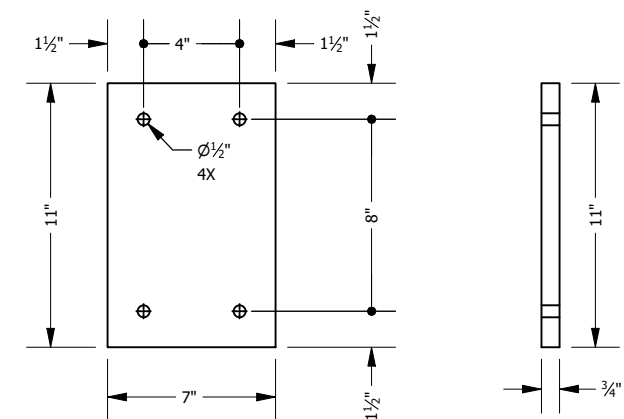
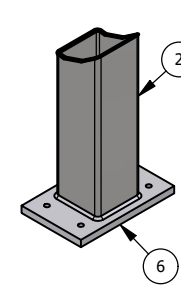
POST CAP
SCALE 1 1/2" = 1'



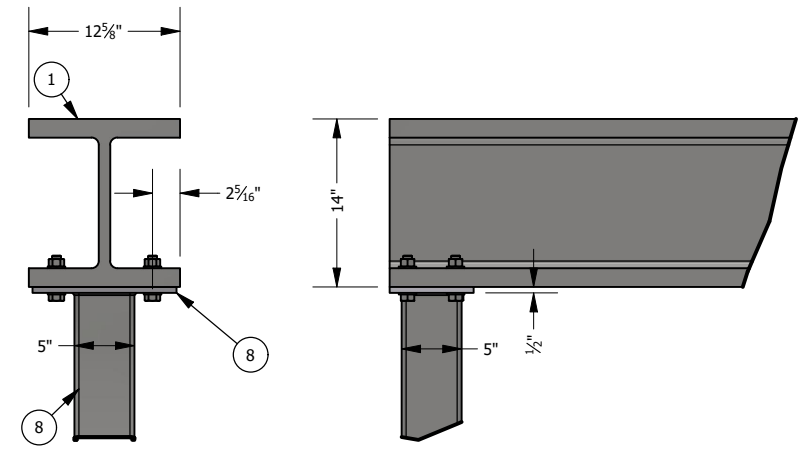
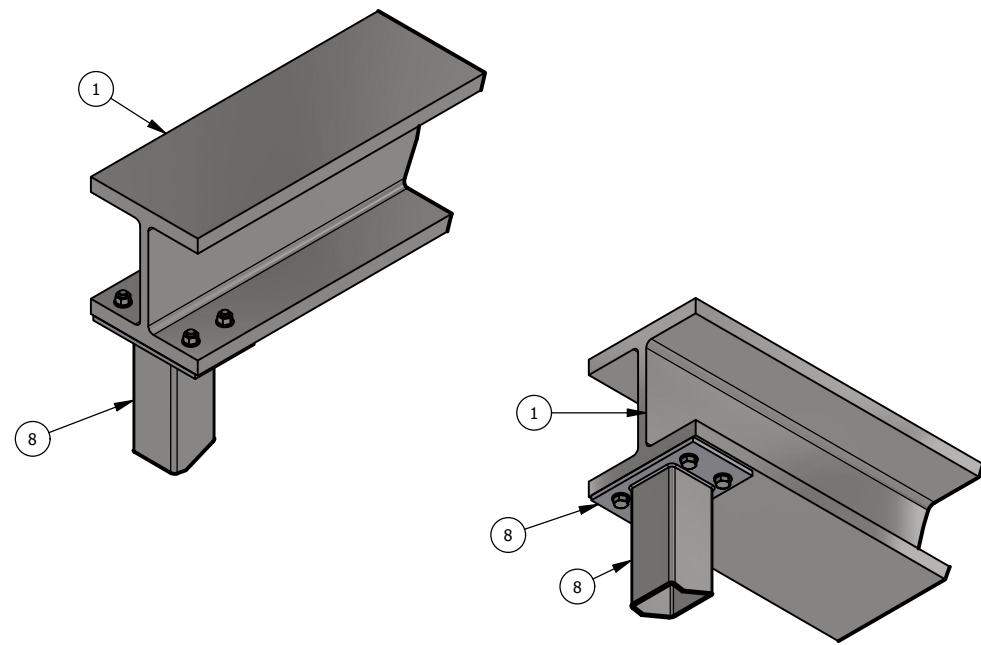
POST BASE - BM 1-2
SCALE 1 1/2" = 1'



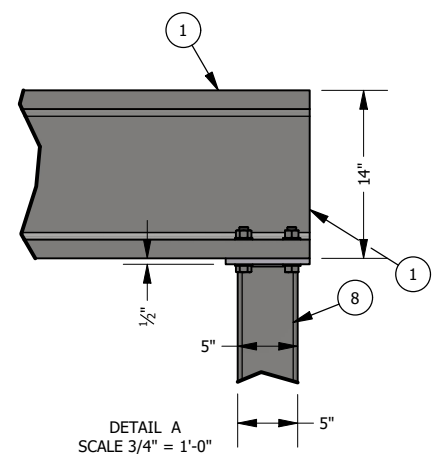
DETAIL D
SCALE 3/4" = 1'-0"



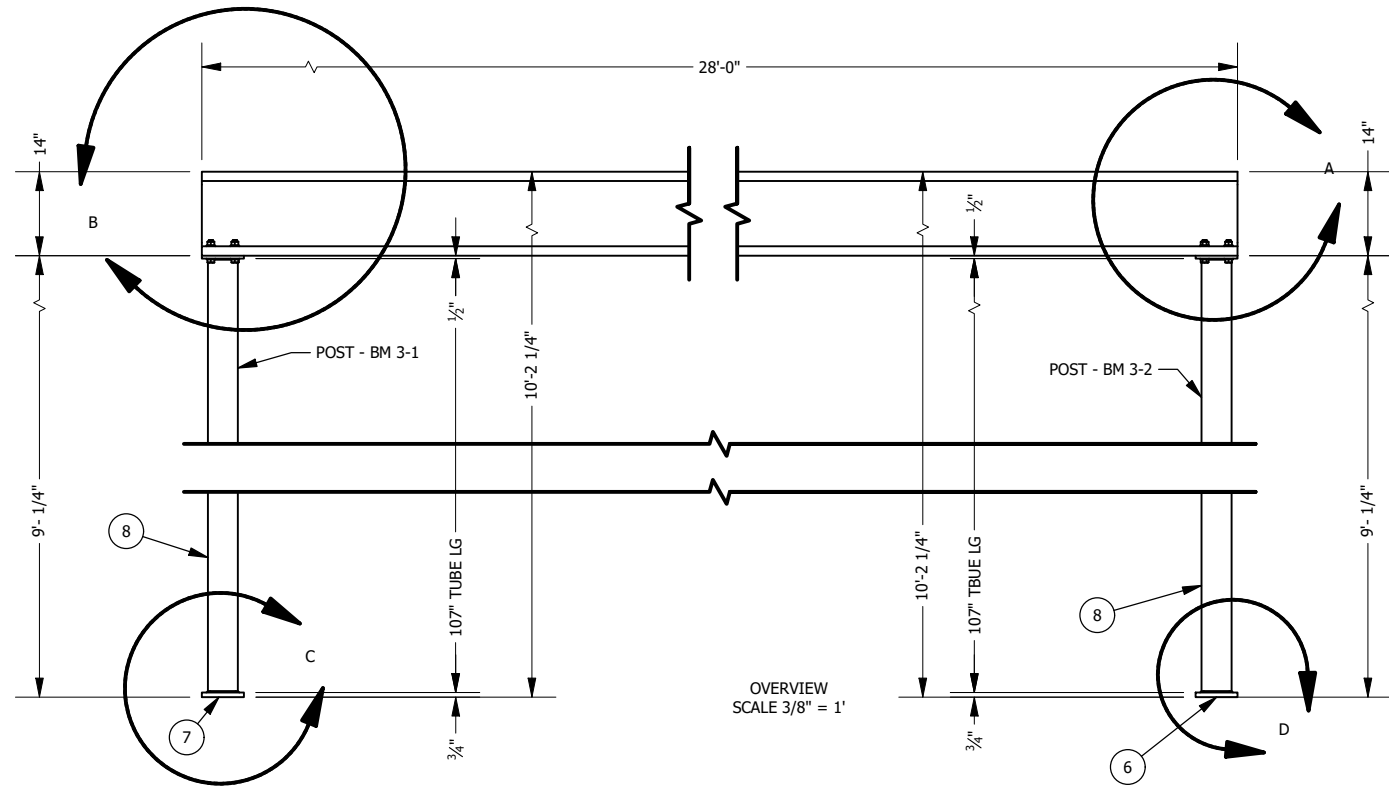
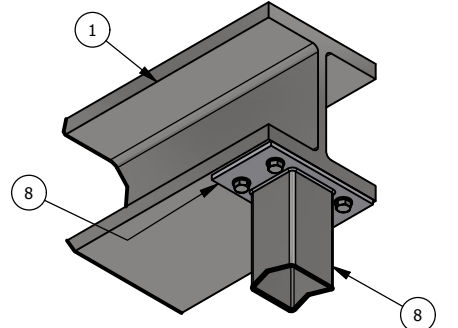
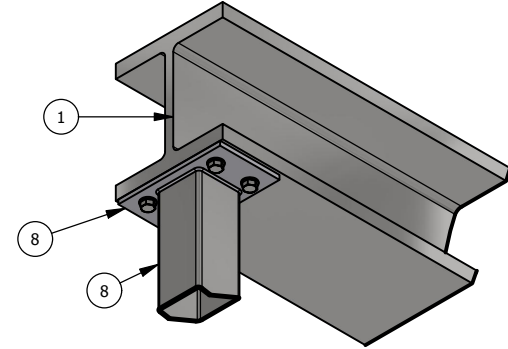
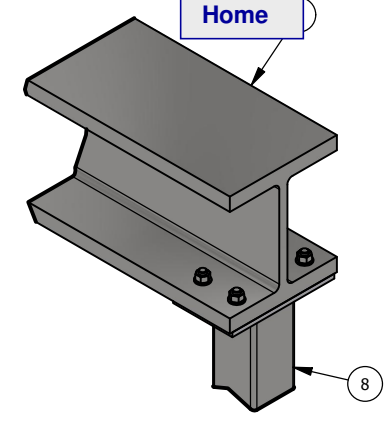
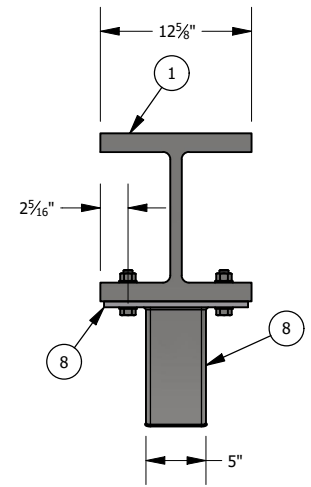
POST BASE PLATE - BM 1-1
SCALE 1 1/2" = 1'



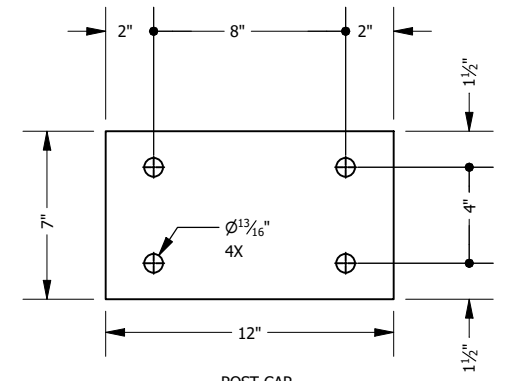
DETAIL B
SCALE 3/4" = 1'-0"



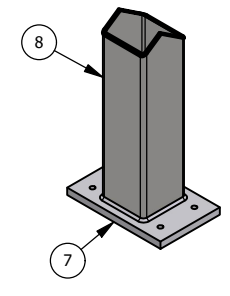
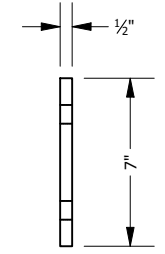
DETAIL A
SCALE 3/4" = 1'-0"



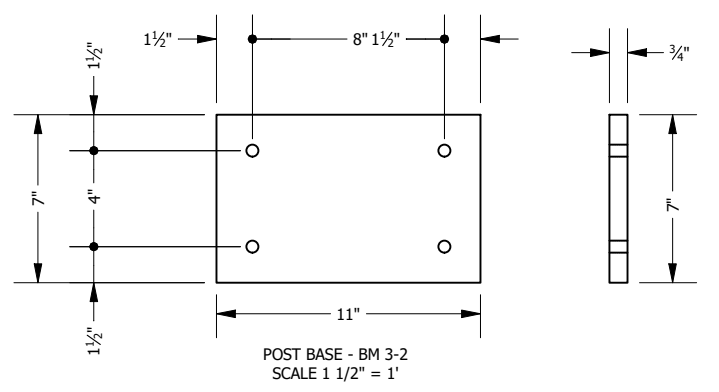
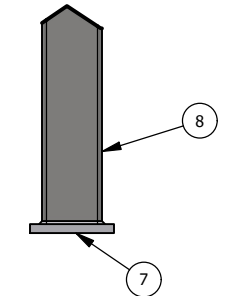
OVERVIEW
SCALE 3/8" = 1'



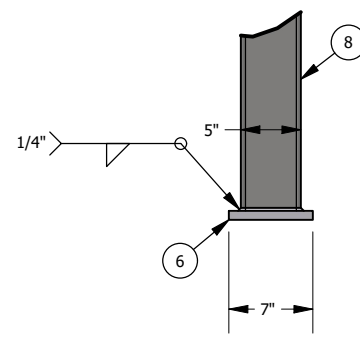
POST CAP
SCALE 1 1/2" = 1'



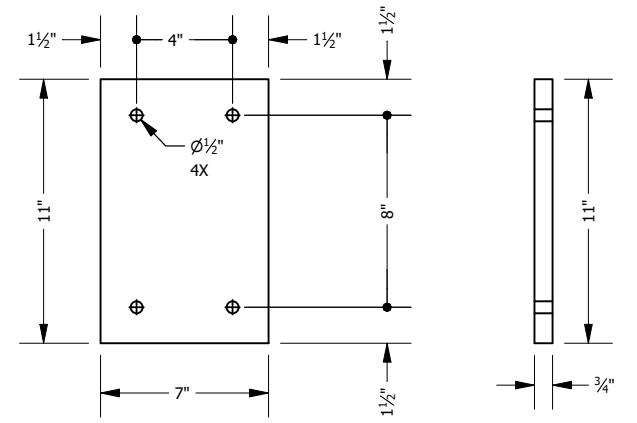
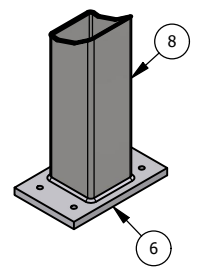
DETAIL C
SCALE 3/4" = 1'-0"



POST BASE - BM 3-2
SCALE 1 1/2" = 1'



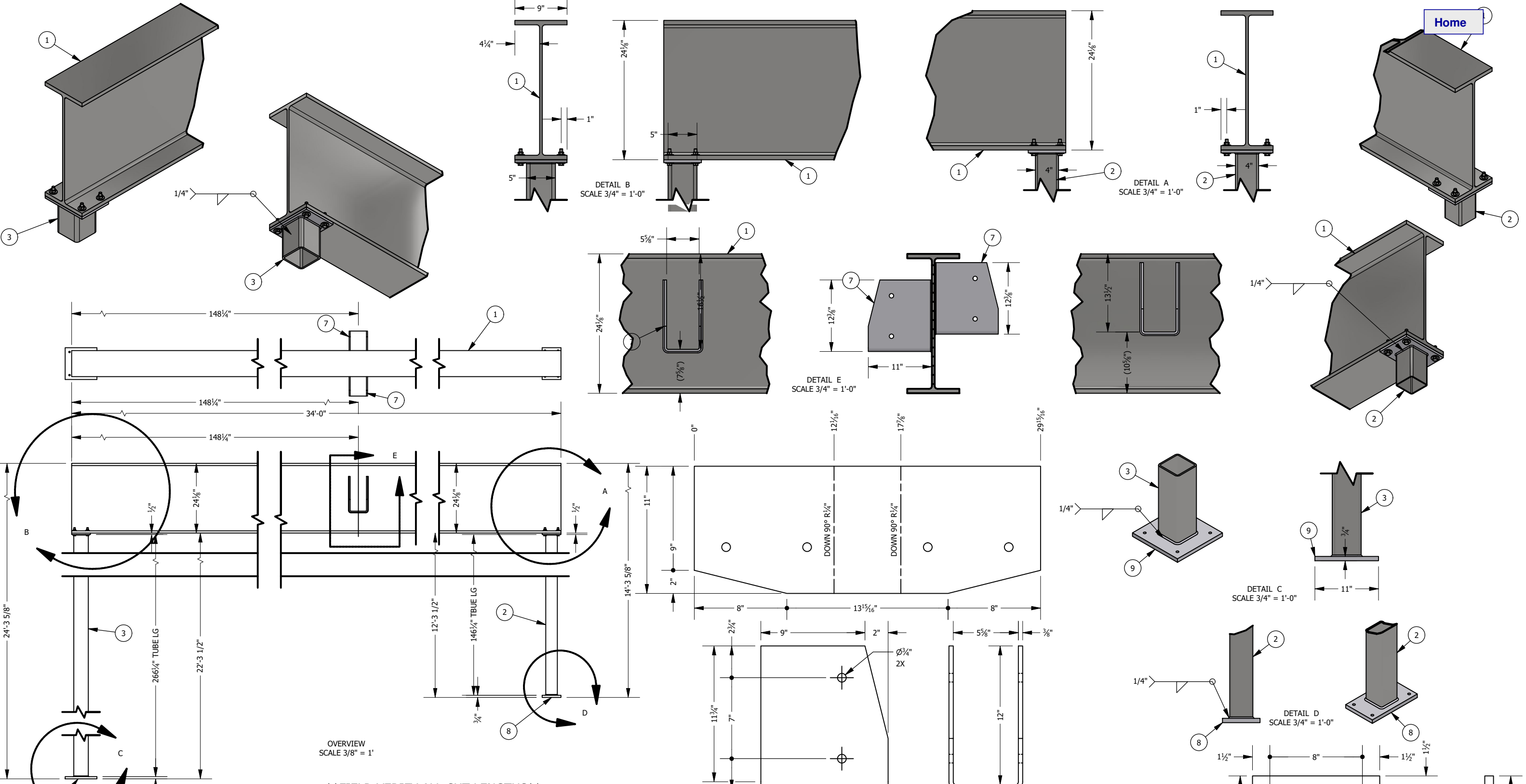
DETAIL D
SCALE 3/4" = 1'-0"



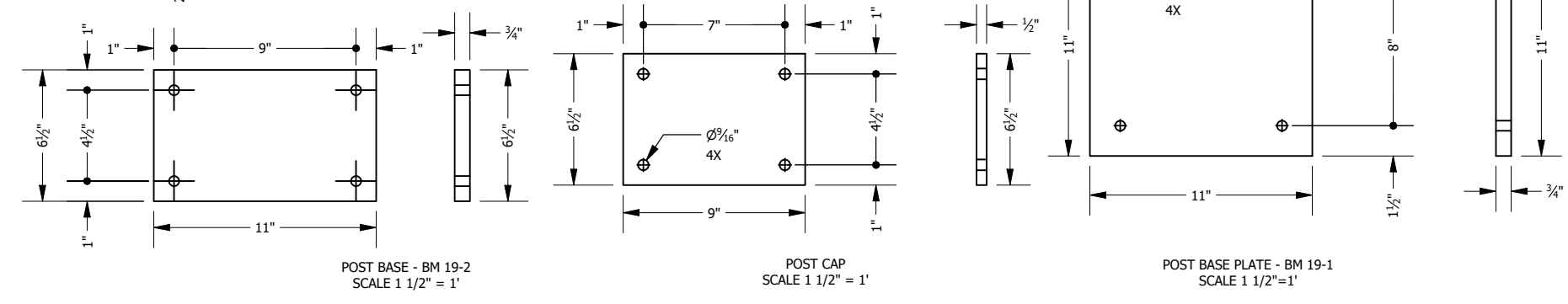
POST BASE PLATE - BM 3-1
SCALE 1 1/2" = 1'

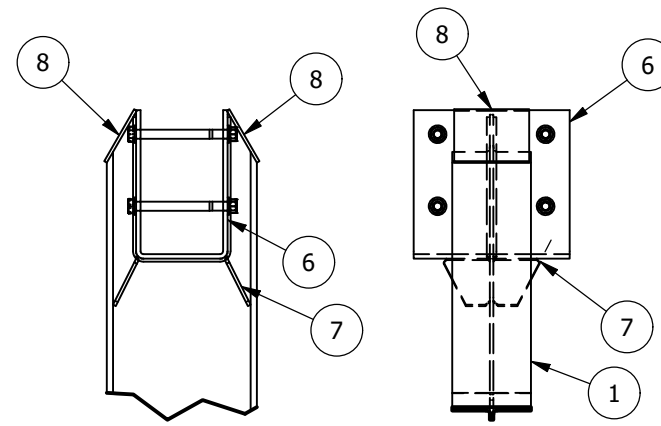
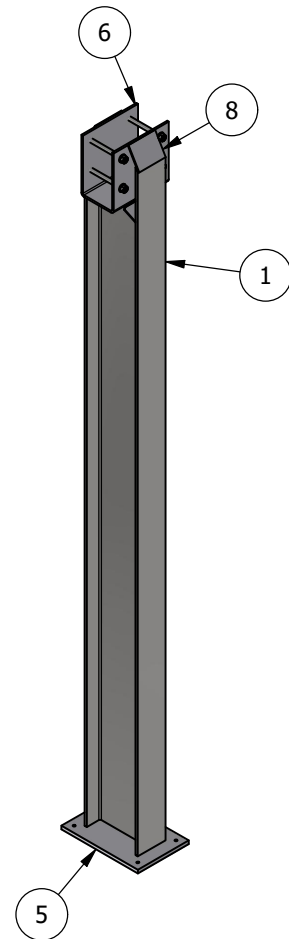
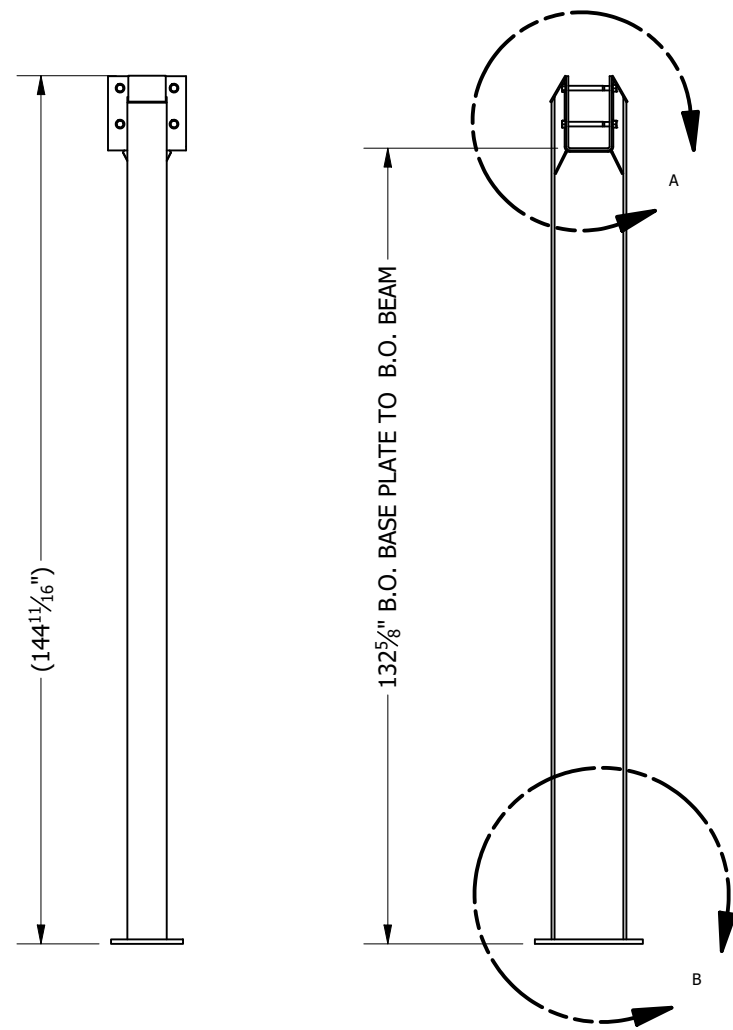
****FIELD VERIFY ALL CUT LENGTHS****

PARTS LIST			
ITEM	QTY	PART NUMBER	DESCRIPTION
1	336.000 in	AISC - W 12x170 - 336	W-Shape
8	214.000 in	AISC HSS - 5 x 5 x 3/16 - 107	Square tube
3	8	ANSI B18.2.2 - 3/4 - 10, HNI	Hex Nuts (Inch Series) Hex Nut
4	16	ANSI B18.22.1 - 3/4 - narrow - Type A	Plain Washer (Inch)Type A and B
5	8	ANSI/ASME B18.2.1 - 3/4-10 UNC - 3.25, HBI	Hex Bolt - UNC (Regular Thread - Inch)
6	1	POST BASE - BM 3-2	
7	1	POST BASE PLATE - BM 3-1	
8	2	POST CAP	

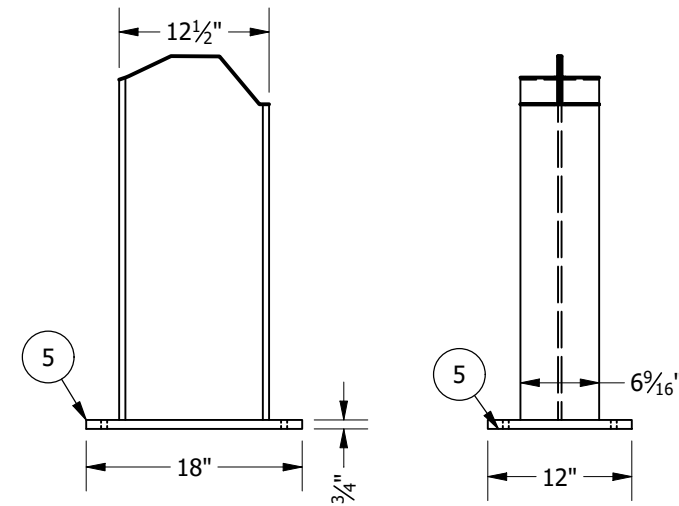


PARTS LIST			
ITEM	QTY	PART NUMBER	DESCRIPTION
1	408.000 in	AISC - W 24X84 - 408	W-Shape
2	146.250 in	AISC HSS - 4 x 4 x 3/16 - 146.25	Square tube
3	266.250 in	AISC HSS - 5 x 5 x 5/16 - 266.25	Square tube
4	8	ANSI B18.2.2 - 1/2 - 13, HNI	Hex Nuts (Inch Series) Hex Nut
5	16	ANSI B18.22.1 - 1/2 - wide - Type A	Plain Washer (Inch) Type A and B
6	8	ANSI/ASME B18.2.1 - 1/2-13 UNC - 2.5, HBI	Hex Bolt - UNC (Regular Thread - Inch)
7	2	Beam 17 Hanger	
8	1	POST BASE - BM 19-2	
9	1	POST BASE PLATE - BM 19-1	
10	2	POST CAP	

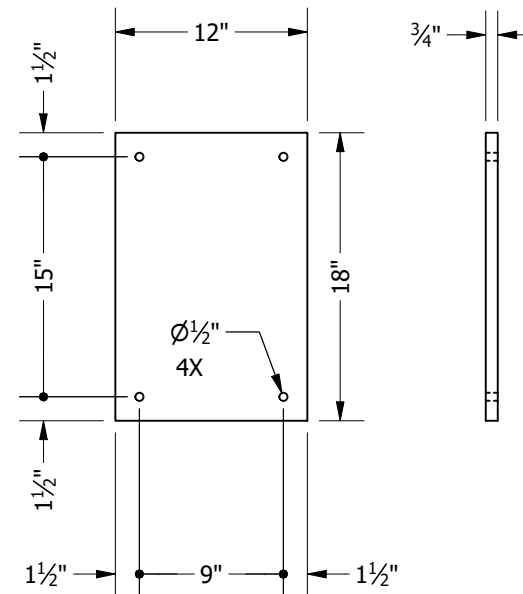




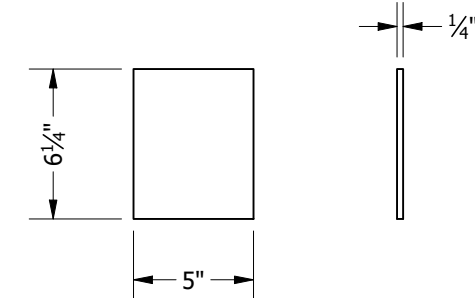
DETAIL A
SCALE 3/4" = 1'-0"



DETAIL B
SCALE 3/4" = 1'-0"



BASE PLATE
SCALE 1"=1'

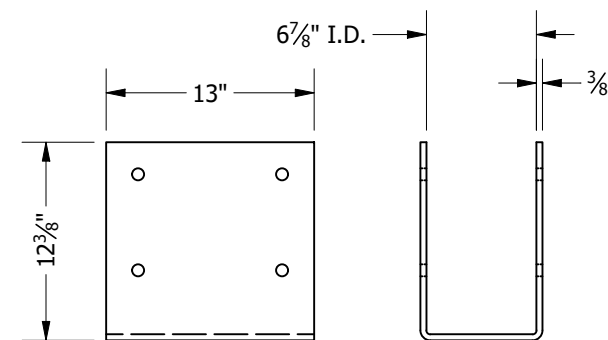


COLUMN CAP
SCALE 1 1/2" = 1'

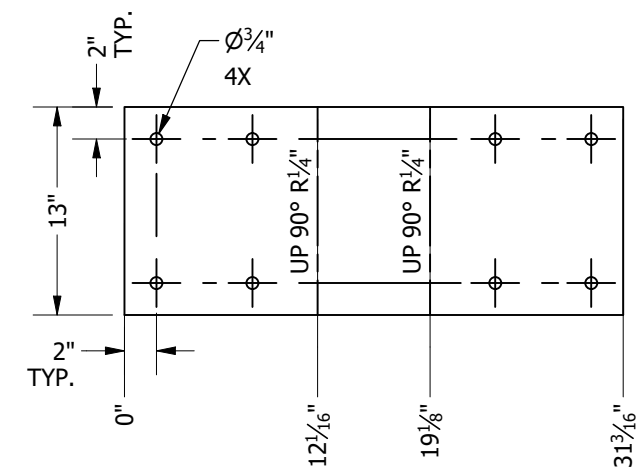
25-003 Column Bm 23-2
SCALE 3/8=1'

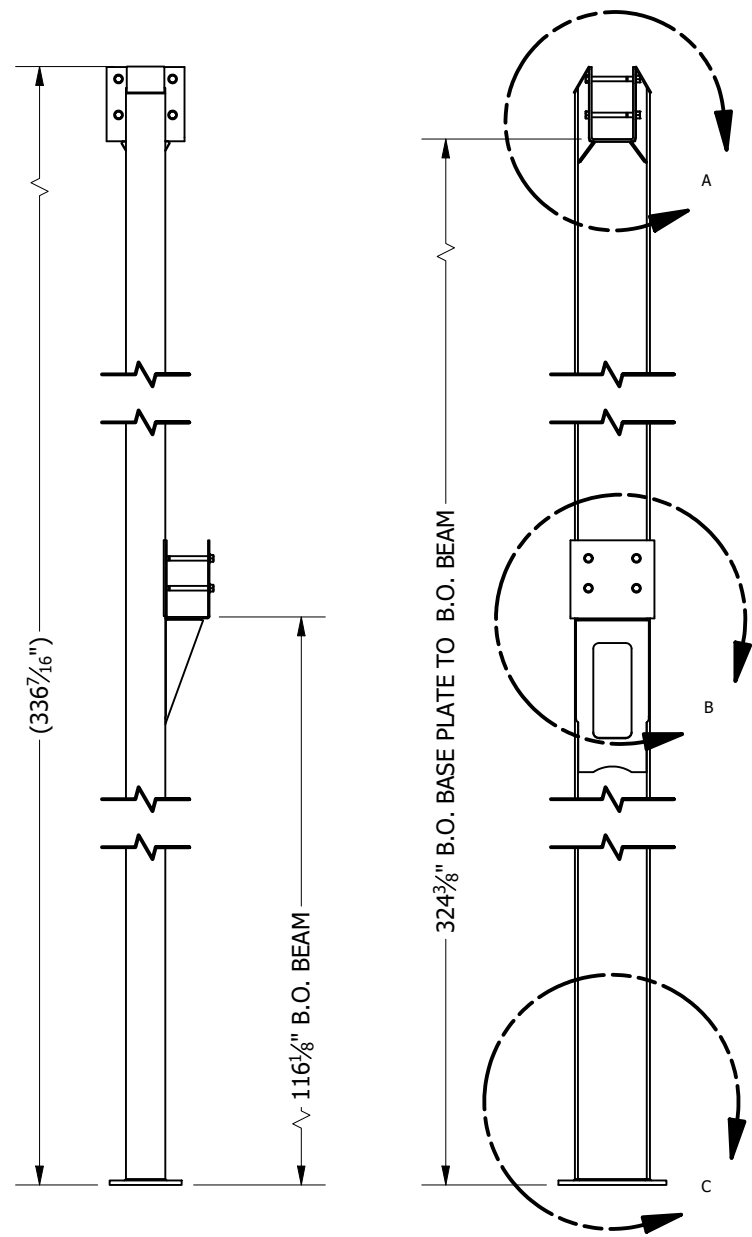
FIELD VERIFY ALL CUT LENGTHS

PARTS LIST			
ITEM	QTY	PART NUMBER	DESCRIPTION
1	143.500 in	AISC - W 12x35 - 143.5	W-Shape
2	4	ANSI B18.2.2 - 3/4 - 10, HNI	Hex Nuts (Inch Series) Hex Nut
3	8	ANSI B18.22.1 - 3/4 - narrow - Type A	Plain Washer (Inch)Type A and B
4	4	ANSI/ASME B18.2.1 - 3/4-10 UNC - 8.5, HBI	Hex Bolt - UNC (Regular Thread - Inch)
5	1	BASE PLATE	
6	1	BM 23-2 BEAM SEAT	
7	4	BM 23-2 FLOOR BEAM GUSSET	
8	2	COLUMN CAP	

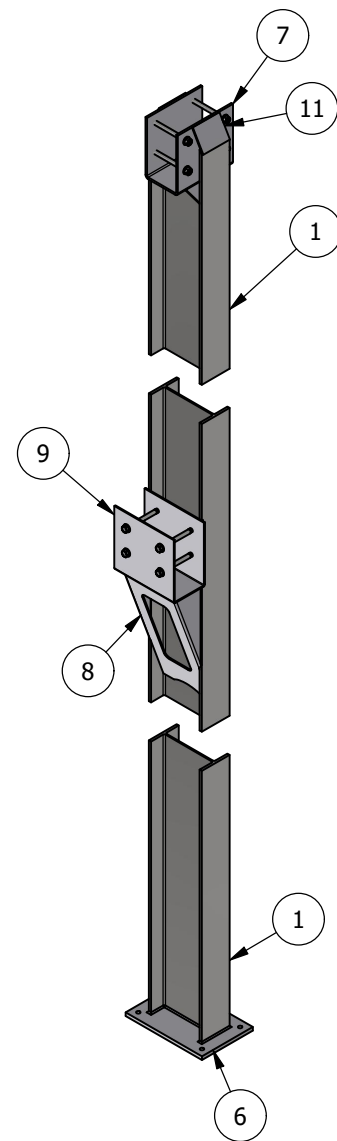


BM 23-2 BEAM SEAT
SCALE 1" = 1'

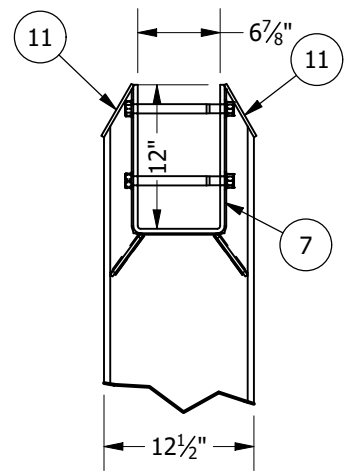




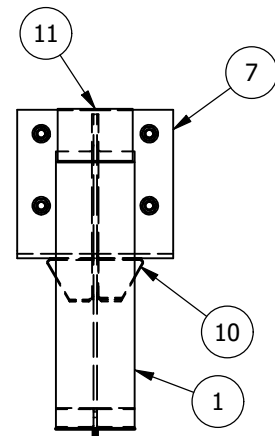
25-003 Column Bm 26-2
SCALE 3/8=1'



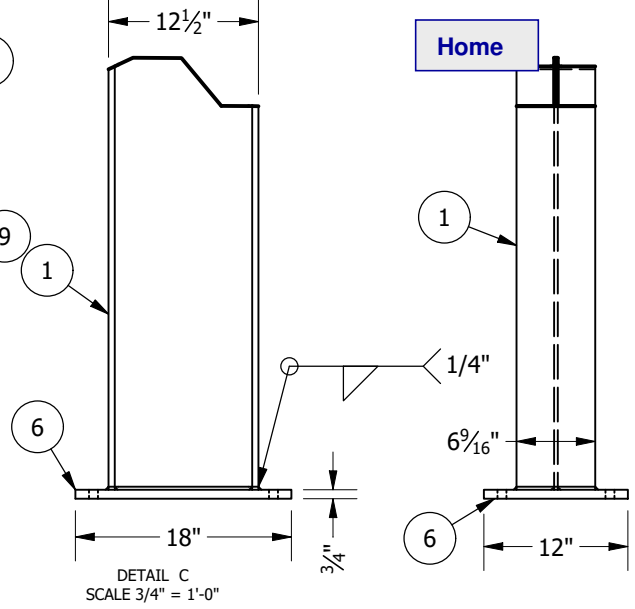
FIELD VERIFY ALL CUT LENGTHS



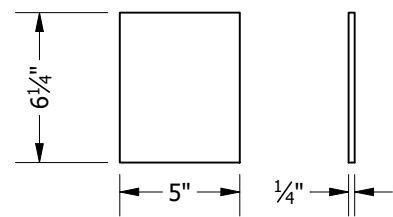
DETAIL A
SCALE 3/4" = 1'-0"



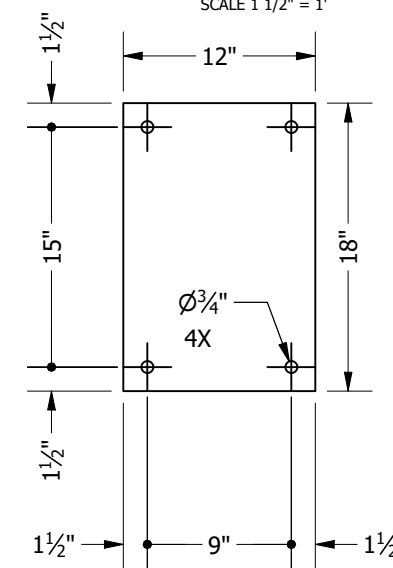
DETAIL B
SCALE 3/4" = 1'-0"



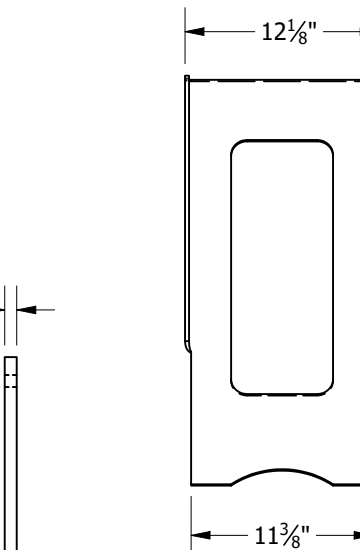
DETAIL C
SCALE 3/4" = 1'-0"



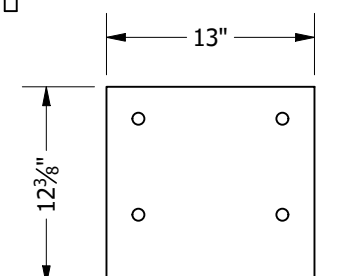
COLUMN CAP
SCALE 1 1/2" = 1'



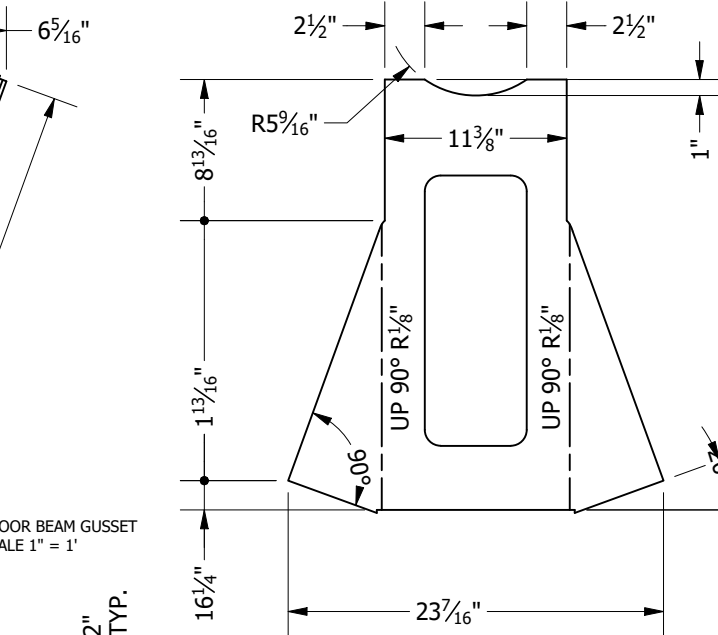
BASE PLATE
SCALE 1"=1'



BM 25-2 FLOOR BEAM GUSSET
SCALE 1" = 1'

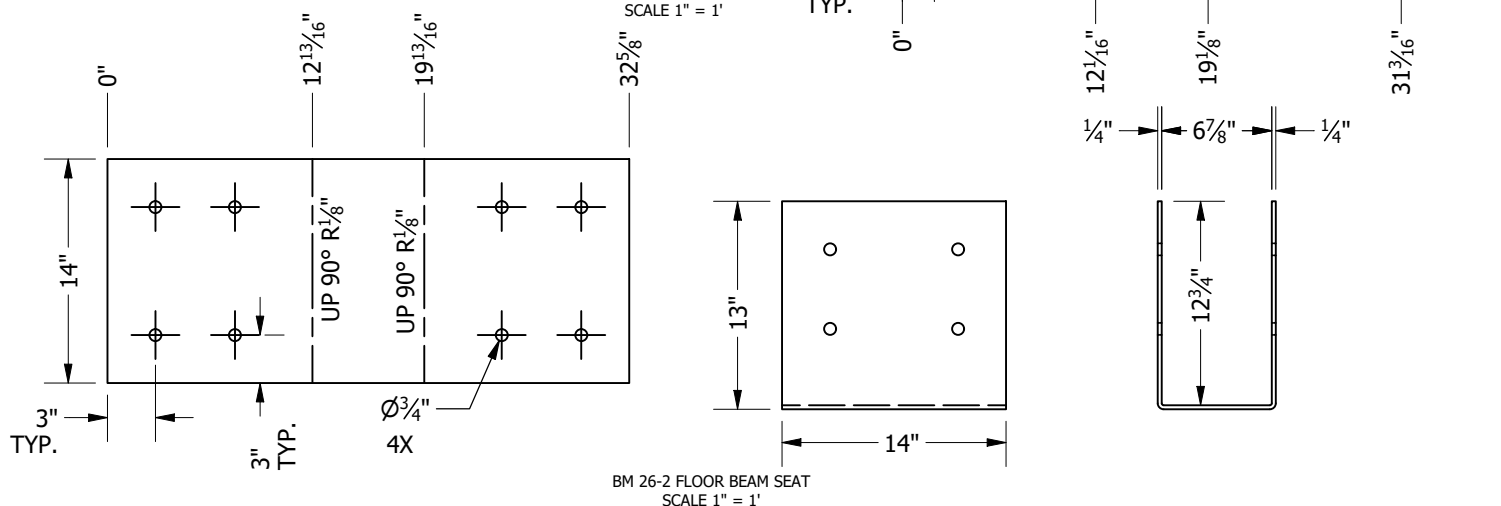


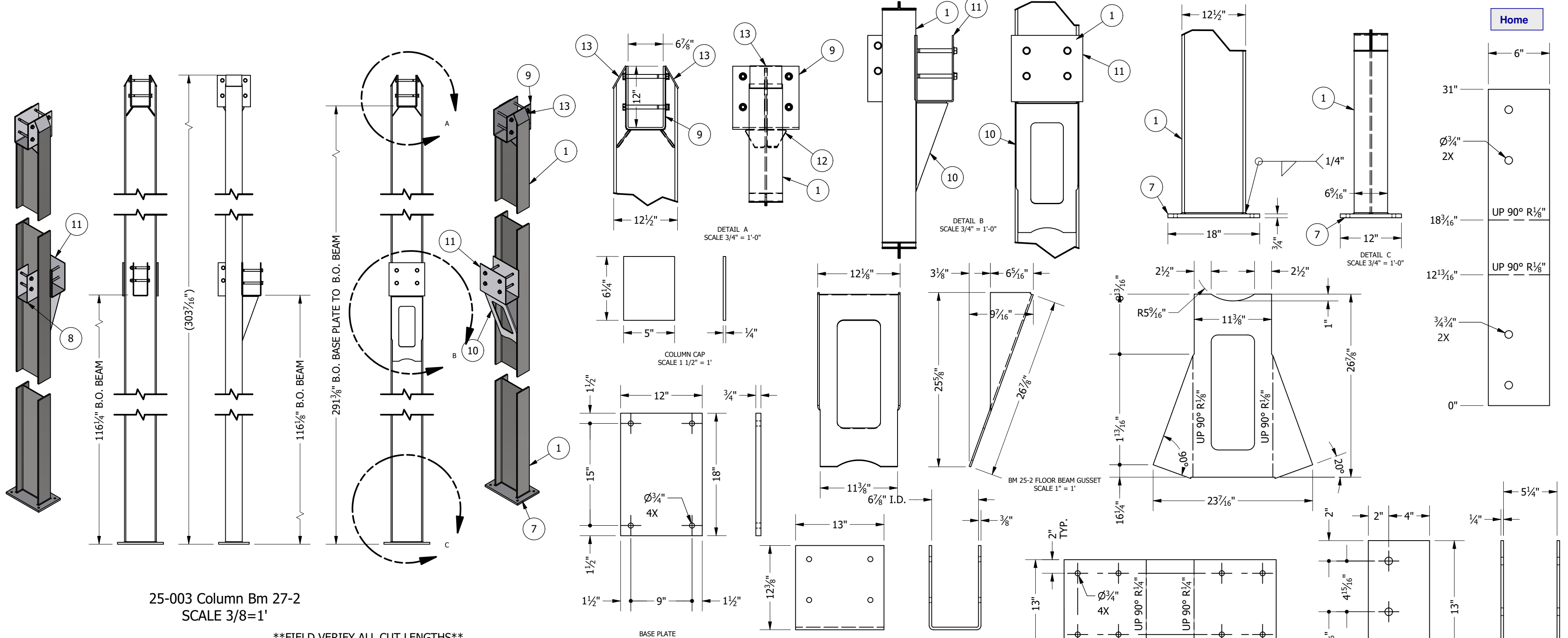
BM 26-2 BEAM SEAT
SCALE 1" = 1'



BM 26-2 FLOOR BEAM SEAT
SCALE 1" = 1'

PARTS LIST			
ITEM	QTY	PART NUMBER	DESCRIPTION
1	335.250 in	AISC - W 12x35 - 335.25	W-Shape
2	8	ANSI B18.2.2 - 3/4 - 10, HNI	Hex Nuts (Inch Series) Hex Nut
3	16	ANSI B18.22.1 - 3/4 - narrow - Type A	Plain Washer (Inch)Type A and B
4	4	ANSI/ASME B18.2.1 - 3/4-10 UNC - 8.5, HBI	Hex Bolt - UNC (Regular Thread - Inch)
5	4	ANSI/ASME B18.2.1 - 3/4-10 UNC - 9, HBI	Hex Bolt - UNC (Regular Thread - Inch)
6	1	BASE PLATE	
8	1	BM 25-2 FLOOR BEAM GUSSET	
7	1	BM 26-2 BEAM SEAT	
9	1	BM 26-2 FLOOR BEAM SEAT	
10	4	BM 26-2 ROOF BEAM GUSSET	
11	2	COLUMN CAP	

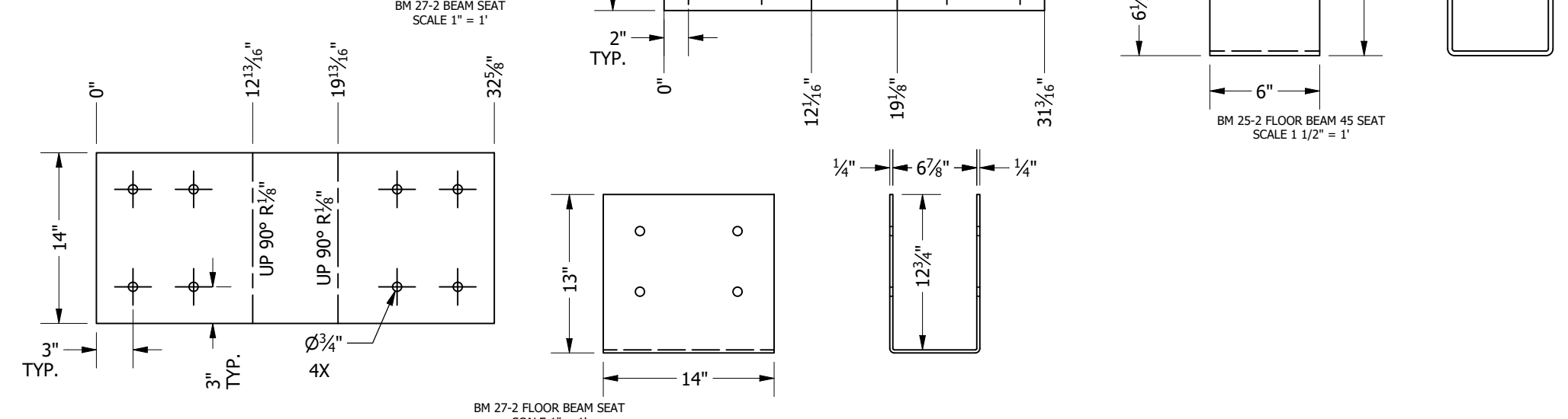


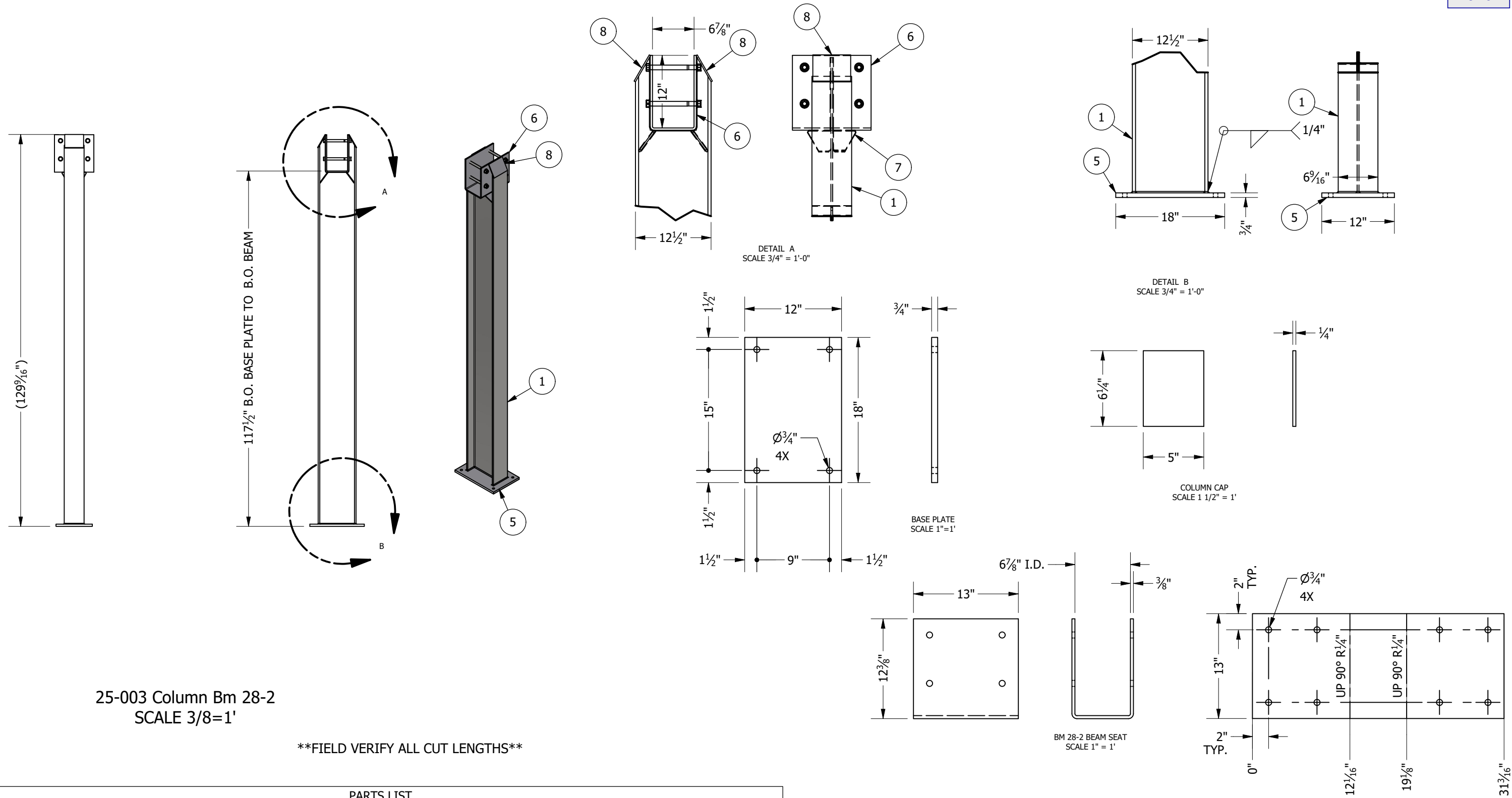


25-003 Column Bm 27-2
SCALE 3/8=1'

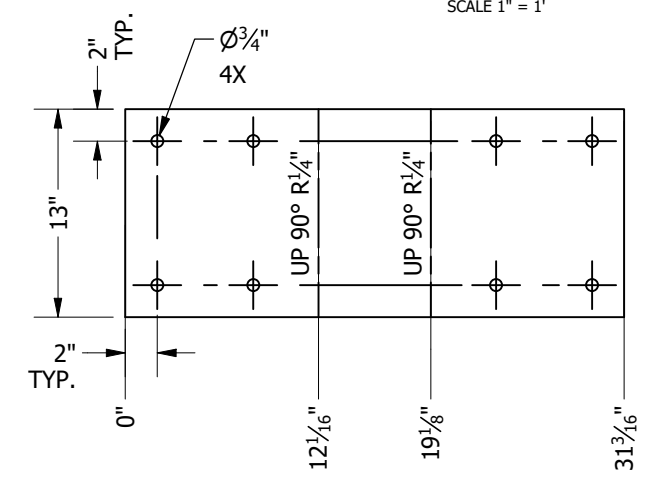
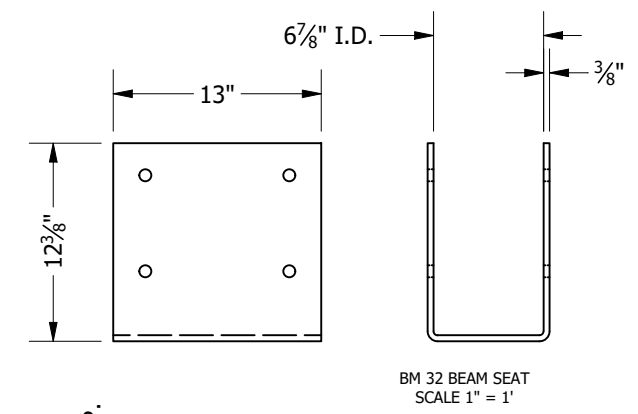
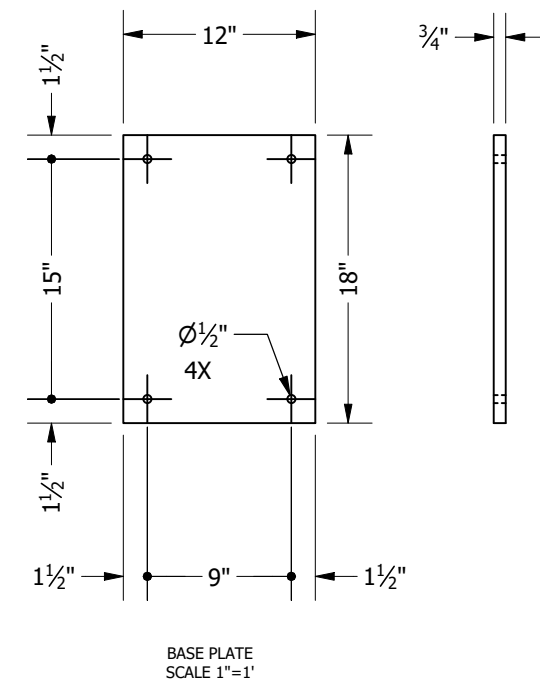
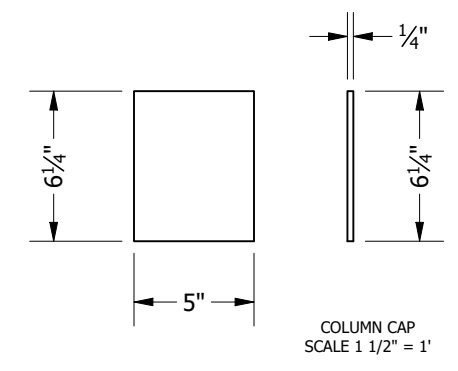
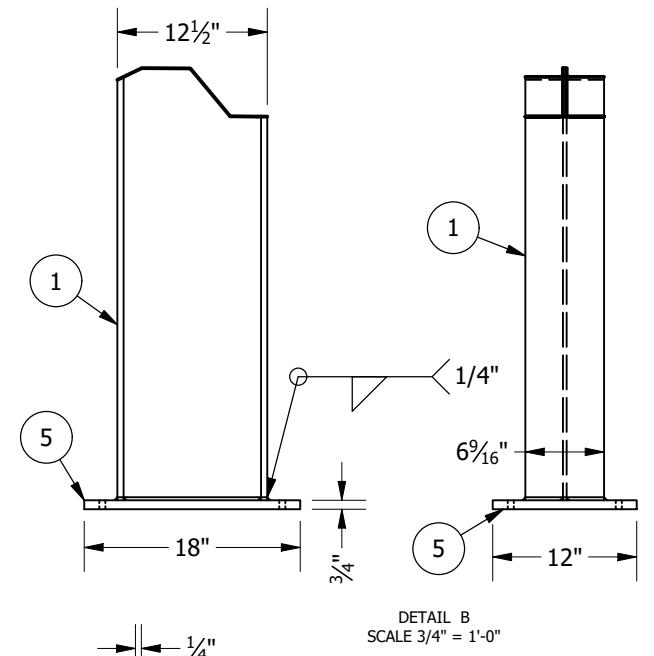
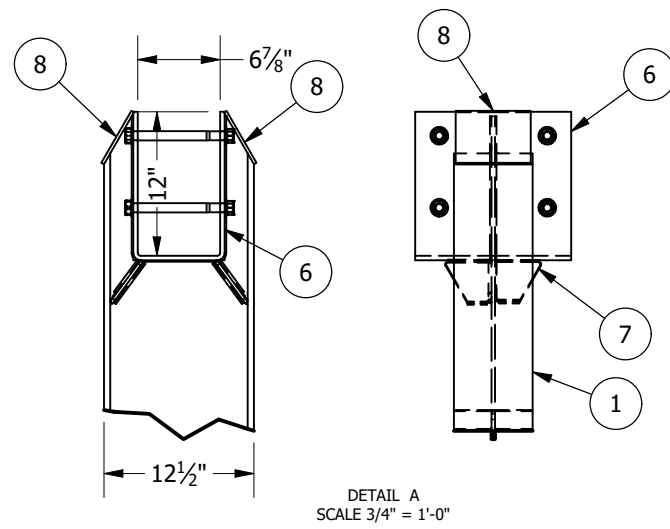
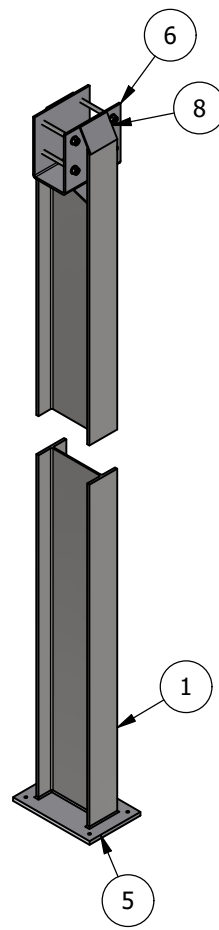
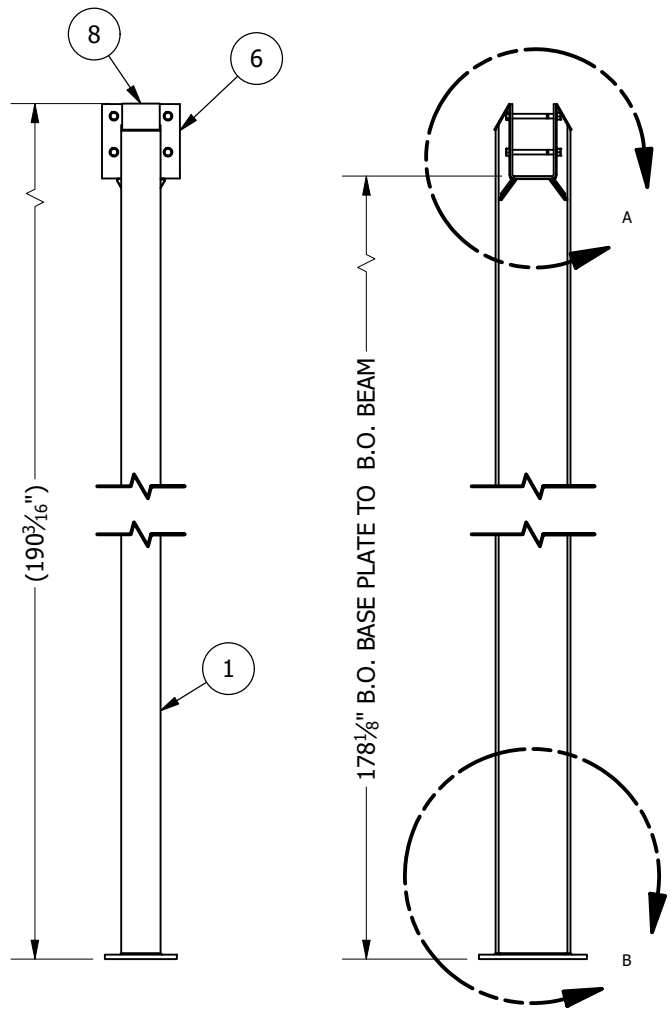
FIELD VERIFY ALL CUT LENGTHS

PARTS LIST			
ITEM	QTY	PART NUMBER	DESCRIPTION
1	302.250 in	AISC - W 12x35 - 302.25	W-Shape
2	10	ANSI B18.2.2 - 3/4 - 10, HNI	Hex Nuts (Inch Series) Hex Nut
3	20	ANSI B18.22.1 - 3/4 - narrow - Type A	Plain Washer (Inch)Type A and B
4	2	ANSI/ASME B18.2.1 - 3/4-10 UNC - 7, HBI	Hex Bolt - UNC (Regular Thread - Inch)
5	4	ANSI/ASME B18.2.1 - 3/4-10 UNC - 8.5, HBI	Hex Bolt - UNC (Regular Thread - Inch)
6	4	ANSI/ASME B18.2.1 - 3/4-10 UNC - 9, HBI	Hex Bolt - UNC (Regular Thread - Inch)
7	1	BASE PLATE	
8	1	BM 25-2 FLOOR BEAM 45 SEAT	
10	1	BM 25-2 FLOOR BEAM GUSSET	
9	1	BM 27-2 BEAM SEAT	
11	1	BM 27-2 FLOOR BEAM SEAT	
12	4	BM 27-2 ROOF BEAM GUSSET	
13	2	COLUMN CAP	





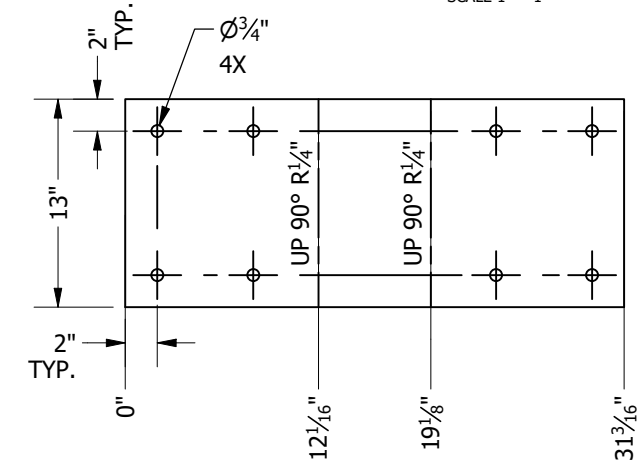
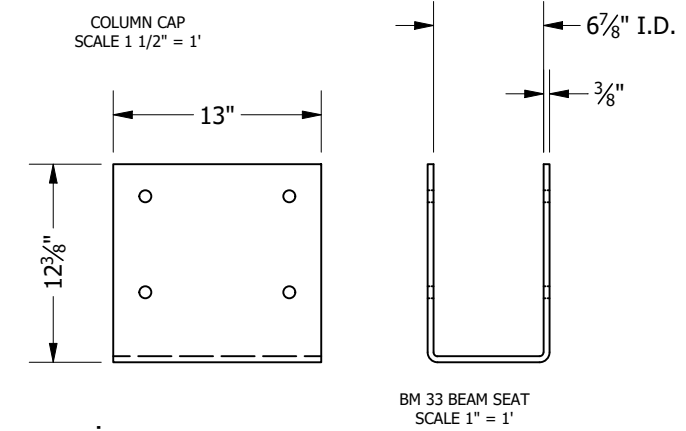
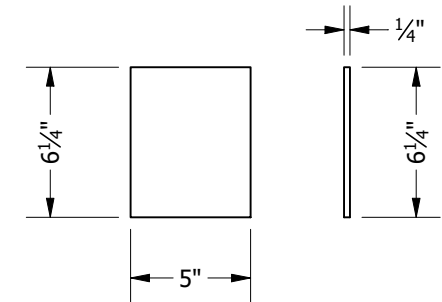
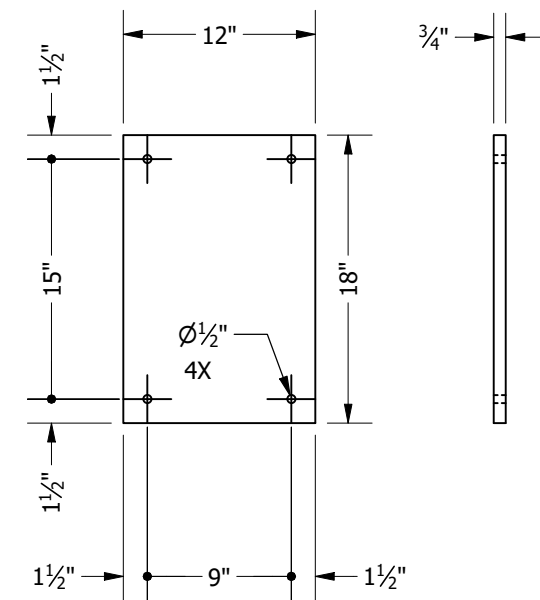
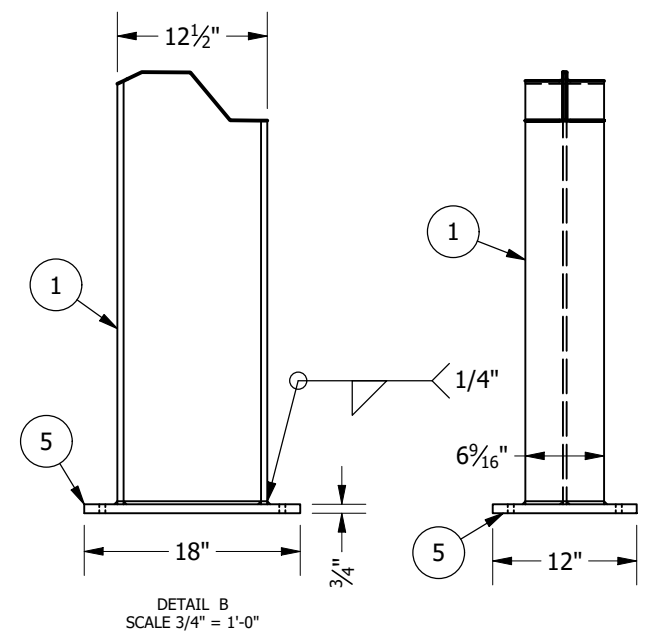
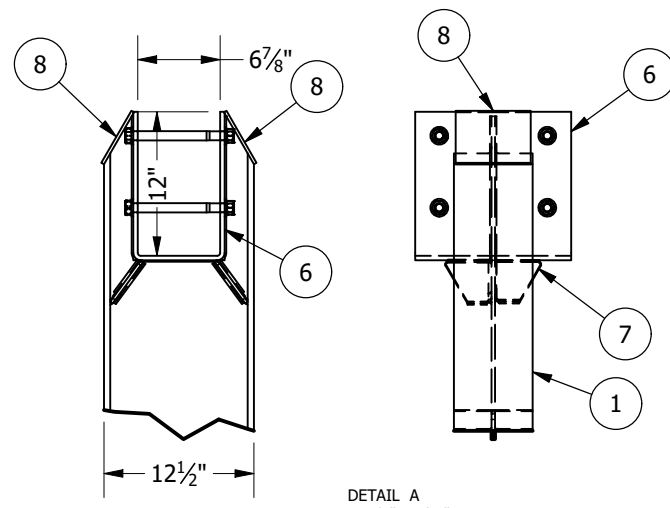
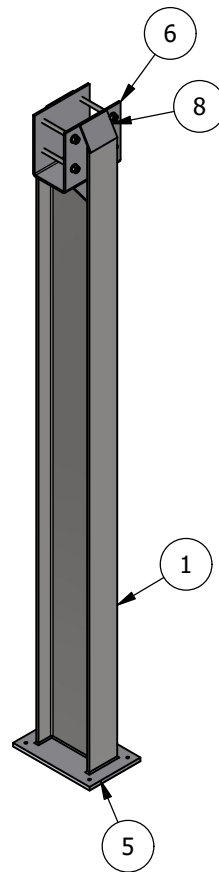
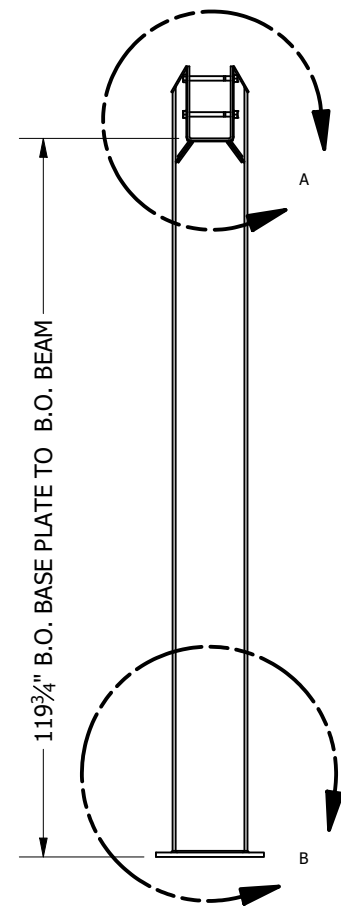
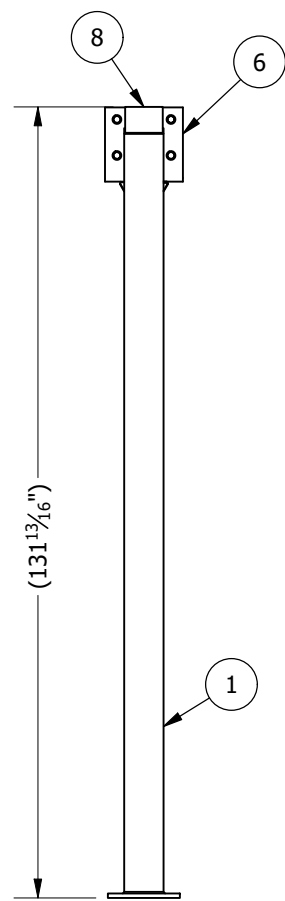
PARTS LIST			
ITEM	QTY	PART NUMBER	DESCRIPTION
1	128.375 in	AISC - W 12x35 - 128.375	W-Shape
2	4	ANSI B18.2.2 - 3/4 - 10, HNI	Hex Nuts (Inch Series) Hex Nut
3	8	ANSI B18.22.1 - 3/4 - narrow - Type A	Plain Washer (Inch)Type A and B
4	4	ANSI/ASME B18.2.1 - 3/4-10 UNC - 8.5, HBI	Hex Bolt - UNC (Regular Thread - Inch)
5	1	BASE PLATE	
6	1	BM 28-2 BEAM SEAT	
7	4	BM 28-2 ROOF BEAM GUSSET	
8	2	COLUMN CAP	



25-003 Column Bm 32
SCALE 3/8=1'

FIELD VERIFY ALL CUT LENGTHS

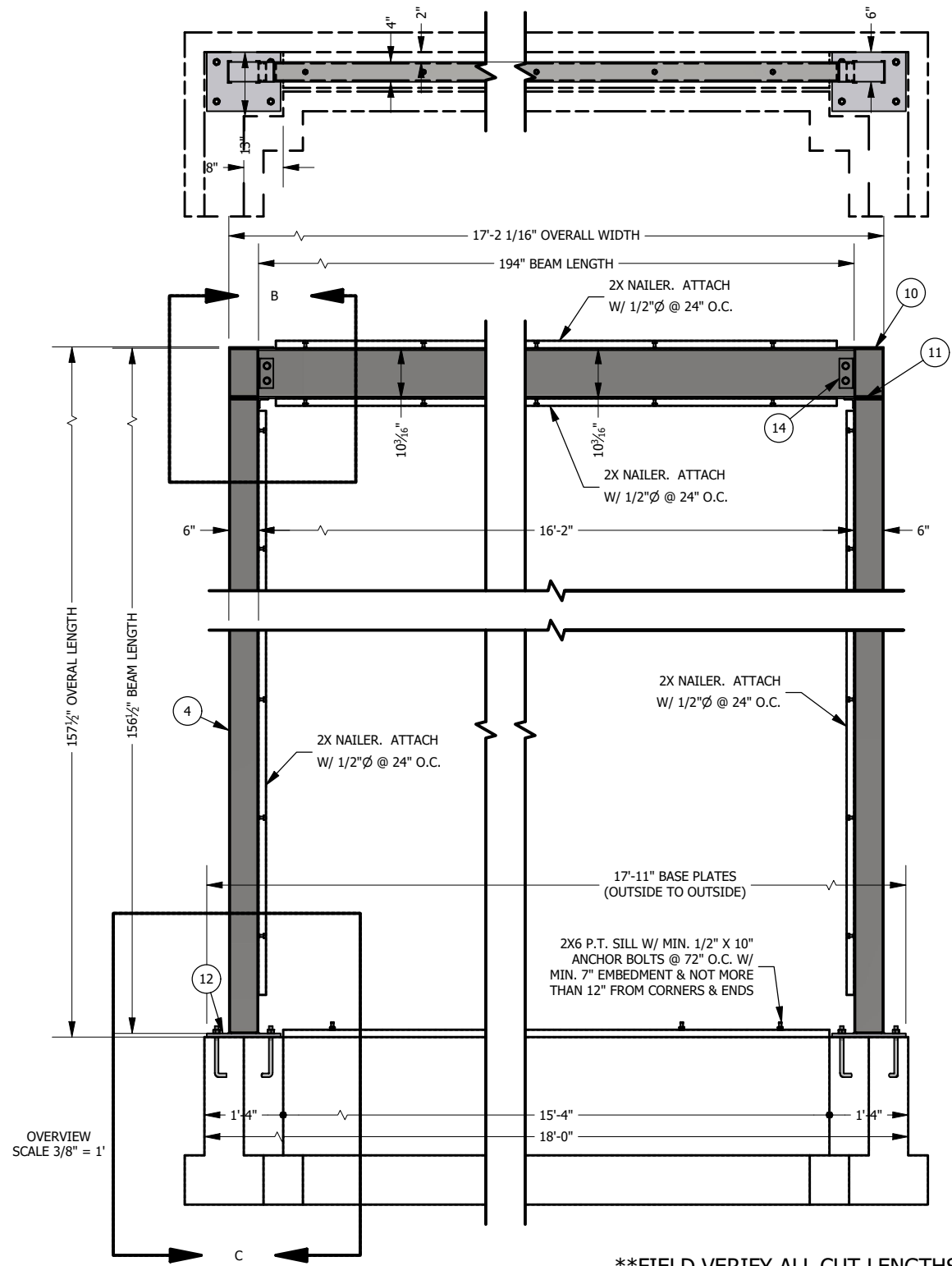
PARTS LIST			
ITEM	QTY	PART NUMBER	DESCRIPTION
1	189.000 in	AISC - W 12x35 - 189	W-Shape
2	4	ANSI B18.2.2 - 3/4 - 10, HNI	Hex Nuts (Inch Series) Hex Nut
3	8	ANSI B18.22.1 - 3/4 - narrow - Type A	Plain Washer (Inch)Type A and B
4	4	ANSI/ASME B18.2.1 - 3/4-10 UNC - 8.5, HBI	Hex Bolt - UNC (Regular Thread - Inch)
5	1	BASE PLATE	
6	1	BM 32 BEAM SEAT	
7	4	BM 32 ROOF BEAM GUSSET	
8	2	COLUMN CAP	



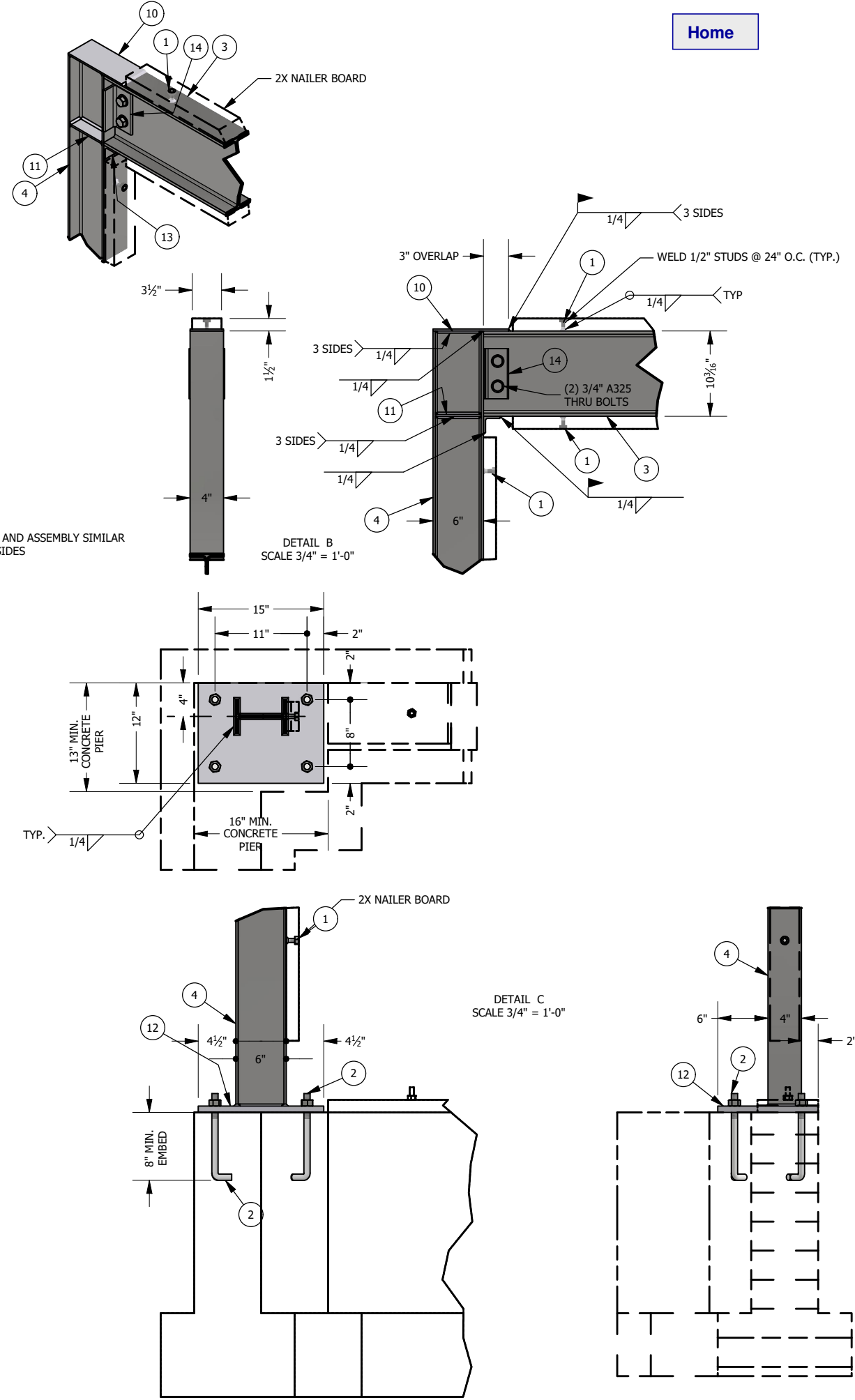
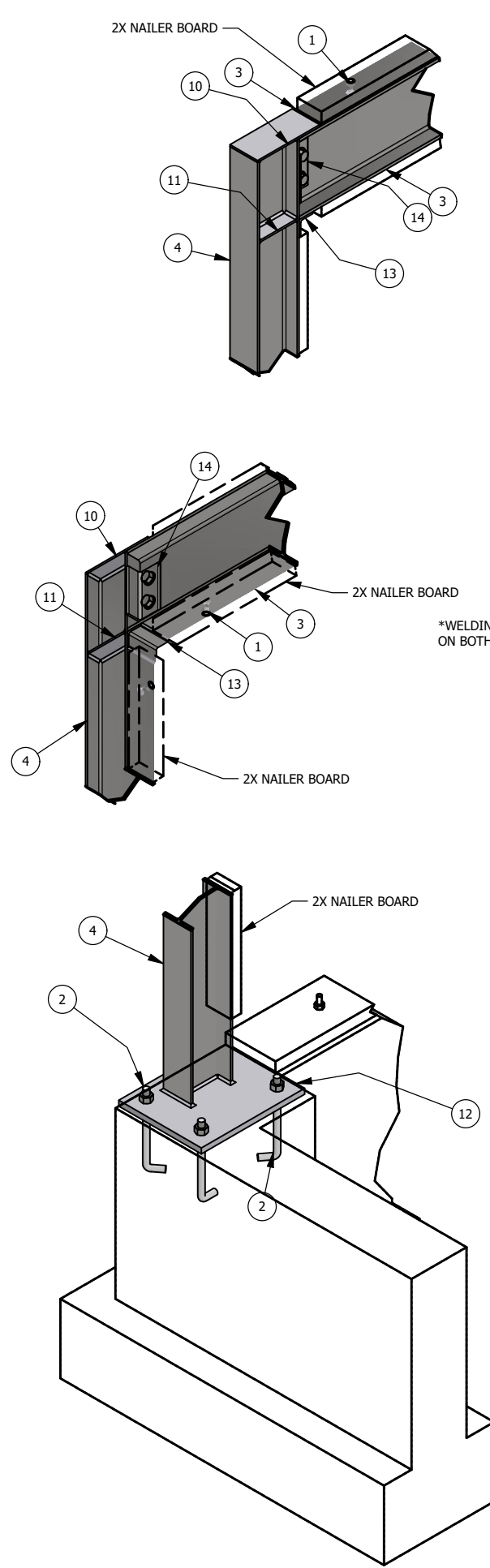
25-003 Column Bm 33
SCALE 3/8=1'

FIELD VERIFY ALL CUT LENGTHS

PARTS LIST			
ITEM	QTY	PART NUMBER	DESCRIPTION
1	130.625 in	AISC - W 12x35 - 130.625	W-Shape
2	4	ANSI B18.2.2 - 3/4 - 10, HNI	Hex Nuts (Inch Series) Hex Nut
3	8	ANSI B18.22.1 - 3/4 - narrow - Type A	Plain Washer (Inch)Type A and B
4	4	ANSI/ASME B18.2.1 - 3/4-10 UNC - 8.5, HBI	Hex Bolt - UNC (Regular Thread - Inch)
5	1	BASE PLATE	
6	1	BM 33 BEAM SEAT	
7	4	BM 33 ROOF BEAM GUSSET	
8	2	COLUMN CAP	



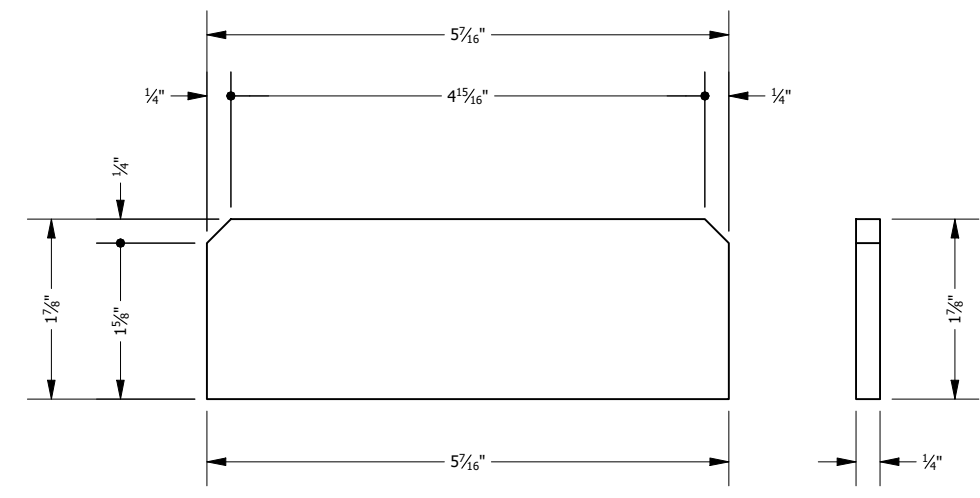
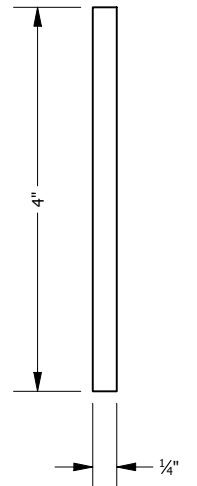
FIELD VERIFY ALL CUT LENGTHS



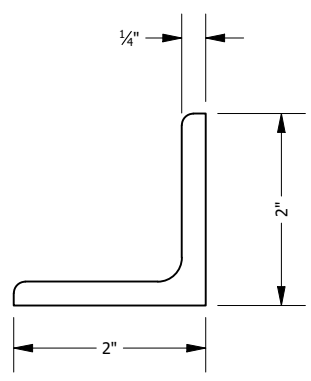
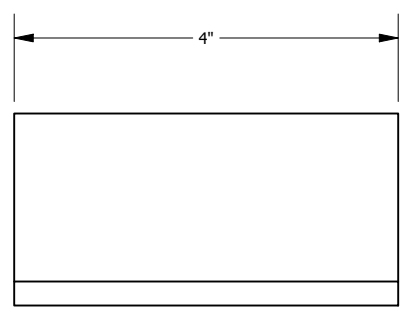
PARTS LIST			
ITEM	QTY	PART NUMBER	DESCRIPTION
1	28	1/2" x 1-1/2" Welded Stud	1/2" x 1-1/2" Welded Stud
2	8	3/4" X 10" Anchor Bolt	3/4" X 10" Anchor Bolt
3	1	AISC - W 10x19 - 194	W-Shape
4	2	AISC - W 6x12 - 156.5	W-Shape
5	8	ANSI B18.2.2 - 3/4 - 10, HHNI	Hex Nuts (Inch Series) Heavy Hex Nut
6	4	ANSI B18.2.2 - 3/4 - 10, HNI	Hex Nuts (Inch Series) Hex Nut
7	8	ANSI B18.22.1 - 3/4 - narrow - Type A	Plain Washer (Inch)Type A and B
8	2	ANSI/ASME B18.2.1 - 3/4-10 UNC - 2, HBI	Hex Bolt - UNC (Regular Thread - Inch)
9	2	ANSI/ASME B18.2.1 - 3/4-10 UNC - 2.25, HBI	Hex Bolt - UNC (Regular Thread - Inch)
10	2	MF1 - 001	Cap Plate
11	4	MF1 - 002	Stiffner Plate
12	2	MF1 - 005	POST BASE PLATE
13	2	MFI - 003	Angle Steel
14	4	MFI - 004	L 3 x 2 x 1/4



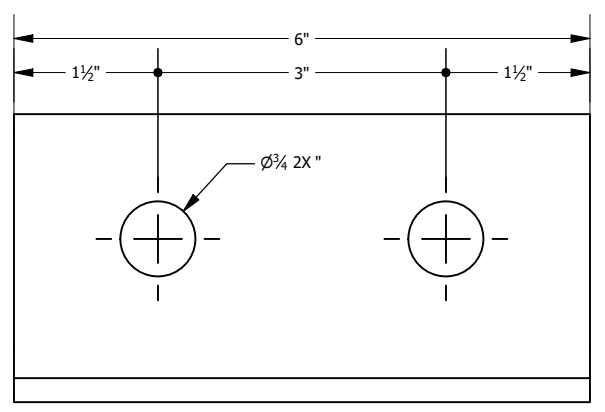
MF1 - 001
SCALE 1/2



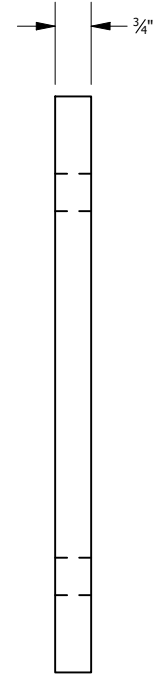
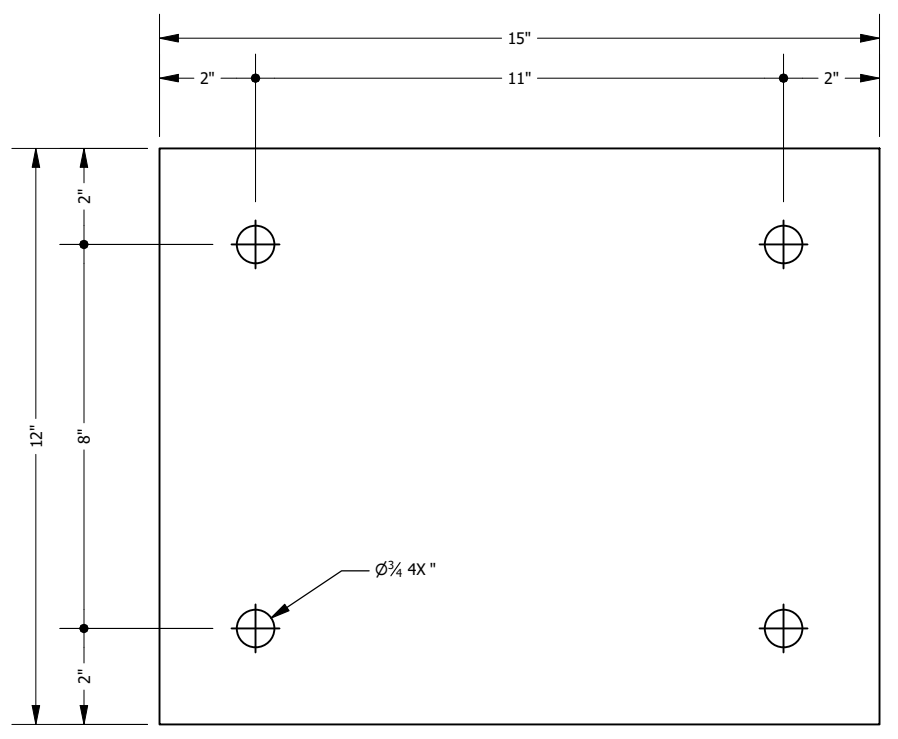
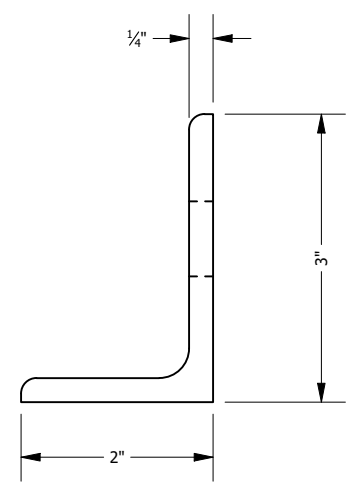
MF1 - 002
SCALE 1/2

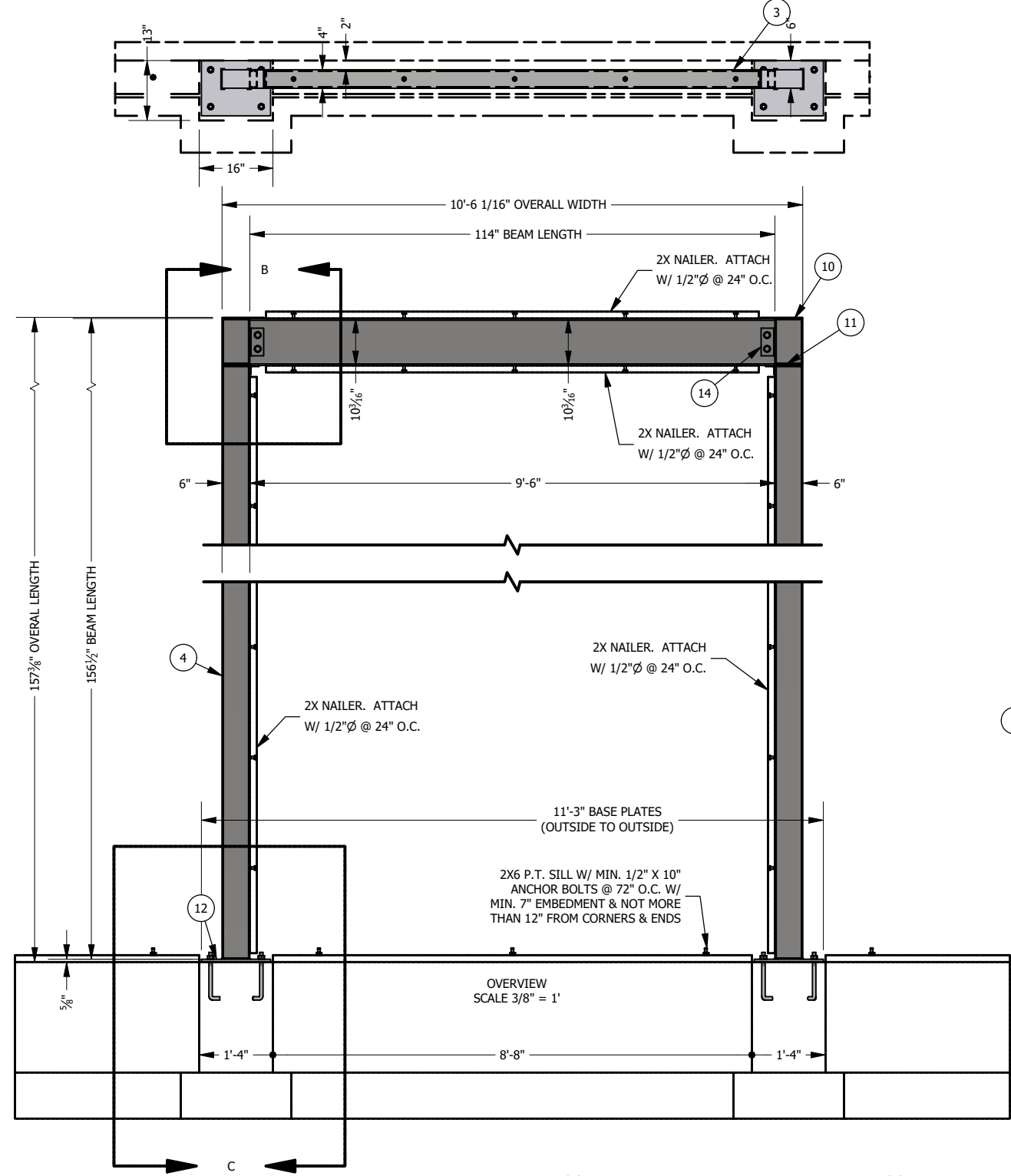


MF1 - 003
SCALE 1/2

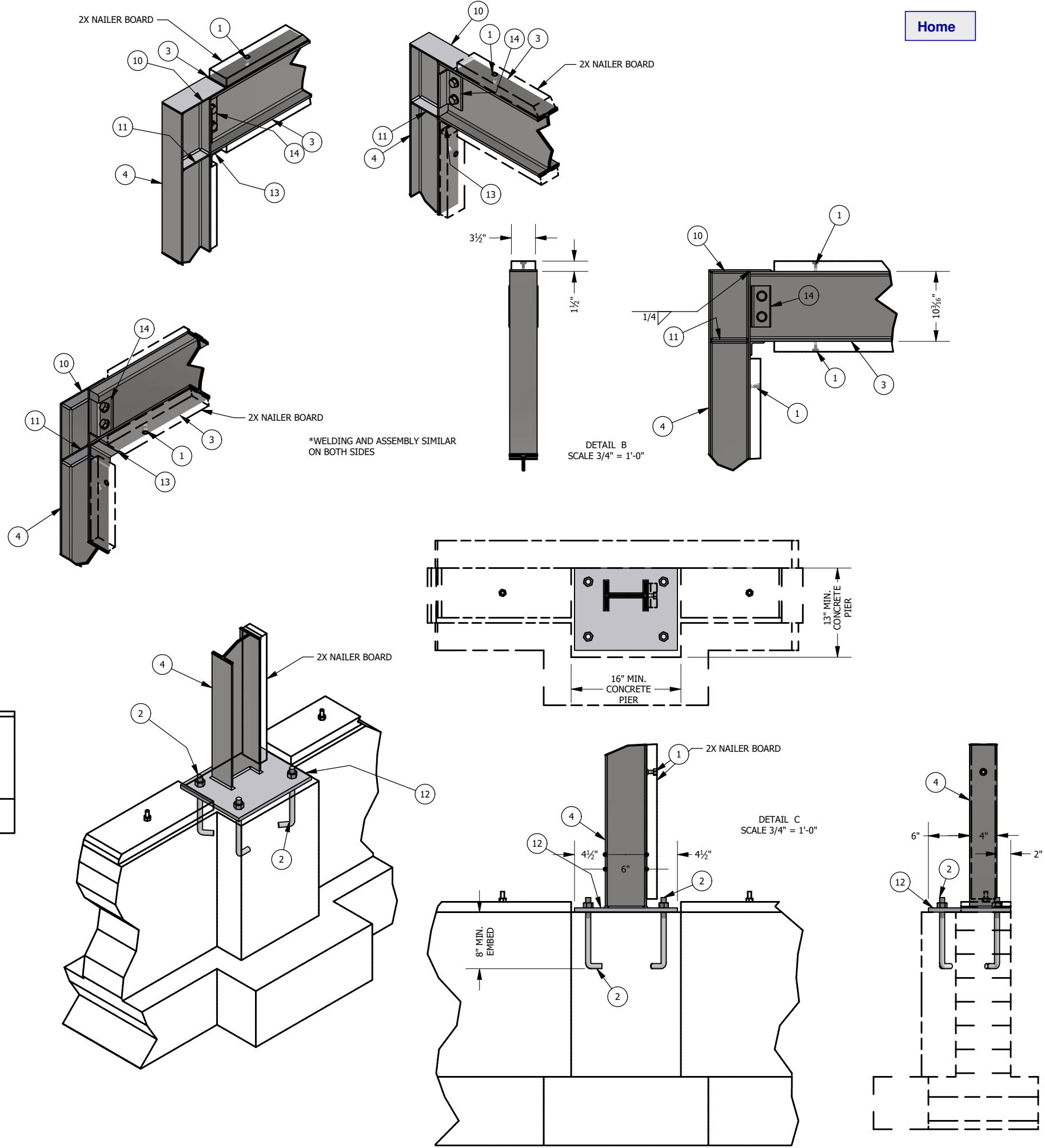


MF1 - 004
SCALE 1/2





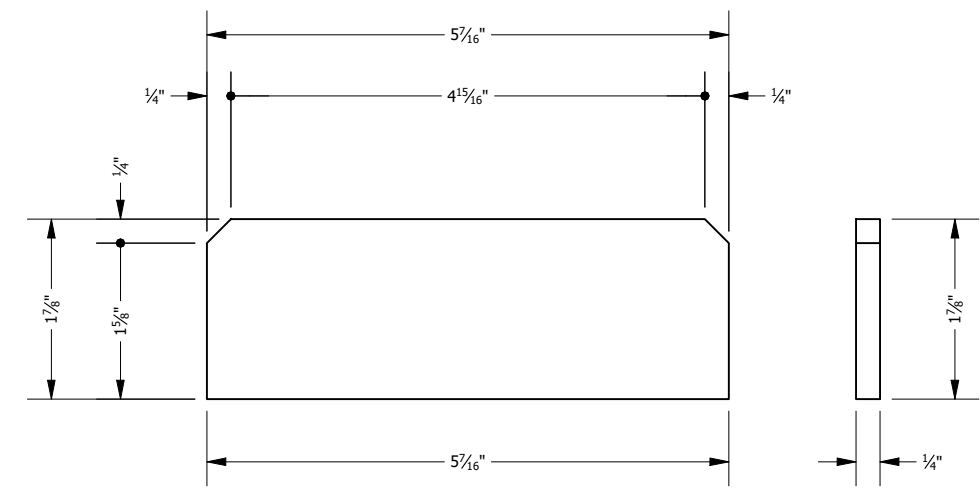
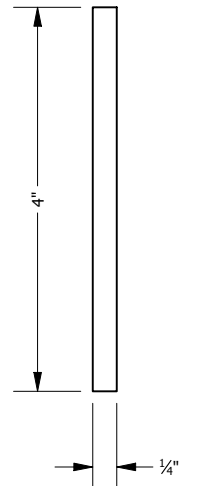
FIELD VERIFY ALL CUT LENGTHS



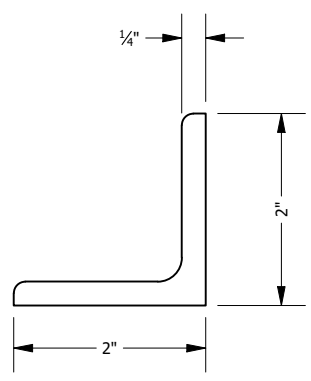
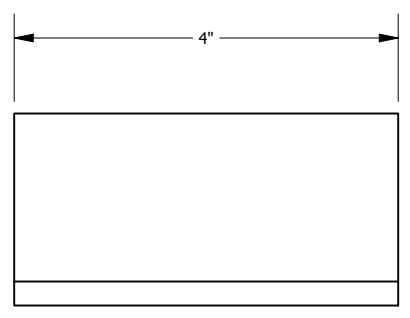
PARTS LIST			
ITEM	QTY	PART NUMBER	DESCRIPTION
1	22	1/2" x 1-1/2" Welded Stud	1/2" x 1-1/2" Welded Stud
2	8	3/4" X 10" Anchor Bolt	3/4" X 10" Anchor Bolt
3	1	AISC - W 10x19 - 114	W-Shape
4	2	AISC - W 6x12 - 156.5	W-Shape
5	8	ANSI B18.2.2 - 3/4 - 10, HHNI	Hex Nuts (Inch Series) Heavy Hex Nut
6	4	ANSI B18.2.2 - 3/4 - 10, HNI	Hex Nuts (Inch Series) Hex Nut
7	8	ANSI B18.22.1 - 3/4 - narrow - Type A	Plain Washer (Inch)Type A and B
8	2	ANSI/ASME B18.2.1 - 3/4-10 UNC - 2, HBI	Hex Bolt - UNC (Regular Thread - Inch)
9	2	ANSI/ASME B18.2.1 - 3/4-10 UNC - 2.25, HBI	Hex Bolt - UNC (Regular Thread - Inch)
10	2	MF2 - 001	Cap Plate
11	4	MF2 - 002	Stiffner Plate
13	2	MF2 - 003	Angle Steel
14	4	MF2 - 004	L 3 x 2 x 1/4
12	2	MF2 - 005	POST BASE PLATE



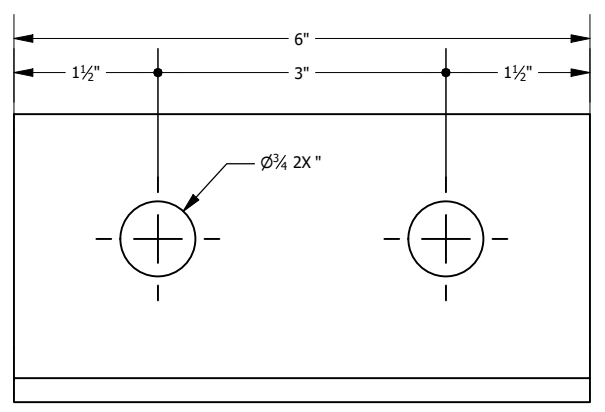
MF2 - 001
SCALE 1/2



MF2 - 002
SCALE 1/2



MF2 - 003
SCALE 1/2



MF2 - 004
SCALE 1/2

